

**Number of Non Govt. Institutions by Level, Gender and Location in
Khyber Pakhtunkhwa**

Institutions

Level	Urban Area Schools				Rural Area Schools				Total			
	Boys	Girls	Co-Edu	Total	Boys	Girls	Co-Edu	Total	Boys	Girls	Co-Edu	Total
Primary	11	12	448	471	31	101	1378	1510	42	113	1826	1981
Middle	31	8	596	635	89	28	1564	1681	120	36	2160	2316
High	78	43	496	617	106	34	1048	1188	184	77	1544	1805
H/Seconadry	55	25	199	279	48	32	282	362	103	57	481	641
Grand Total	175	88	1739	2002	274	195	4272	4741	449	283	6011	6743

**Teachers in Non Govt. Institutions by Level, Gender and Location in
Khyber Pakhtunkhwa**

Teachers

Level	Urban Area Schools				Rural Area Schools				Total			
	Boys	Girls	Co-Edu	Total	Boys	Girls	Co-Edu	Total	Boys	Girls	Co-Edu	Total
Primary	81	56	3245	3382	149	142	6255	6546	230	198	9500	9928
Middle	375	91	6505	6971	817	232	16010	17059	1192	323	22515	24030
High	2088	997	10027	13112	1934	464	18354	20752	4022	1461	28381	33864
H/Seconadry	1243	607	6501	8351	877	475	7800	9152	2120	1082	14301	17503
Grand Total	3787	1751	26278	31816	3777	1313	48419	53509	7564	3064	74697	85325

**Enrolment in Non Govt. Institutions by Level, Gender and Location in
Khyber Pakhtunkhwa**

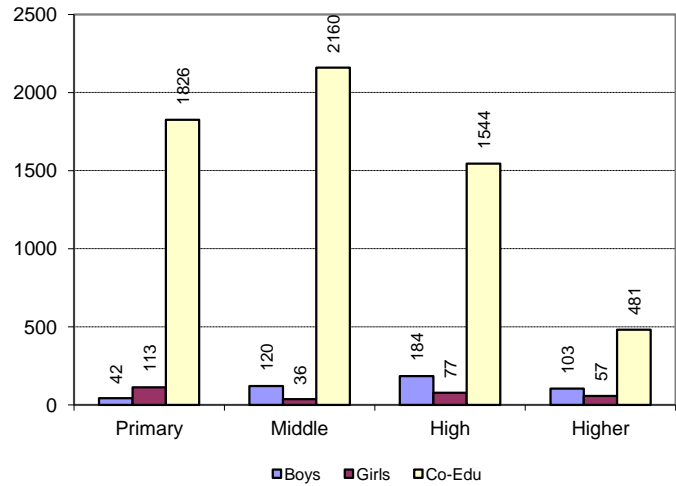
Enrolment

Level	Urban Area Schools				Rural Area Schools				Total			
	Boys	Girls	Co-Edu	Total	Boys	Girls	Co-Edu	Total	Boys	Girls	Co-Edu	Total
Primary	1314	1346	47897	50557	2797	4553	103800	111150	4111	5899	151697	161707
Middle	7327	1010	99457	107794	17227	4124	265781	287132	24554	5134	365238	394926
High	35306	17399	170781	223486	44126	8074	361334	413534	79432	25473	532115	637020
H/Seconadry	21867	8810	113681	144358	15276	7351	150008	172635	37143	16161	263689	316993
Grand Total	65814	28565	431816	526195	79426	24102	880923	984451	145240	52667	1312739	1510646

Note: Play Group and Nursery students are excluded.

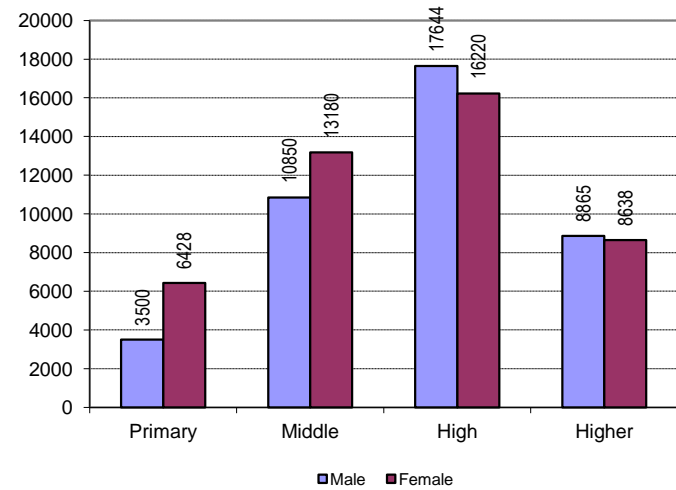
Number of Non-Government Schools in Khyber Pakhtunkhwa

Schools	Boys	Girls	Co-Edu	Total
Primary	42	113	1826	1981
Middle	120	36	2160	2316
High	184	77	1544	1805
Higher	103	57	481	641
Total	449	283	6011	6743



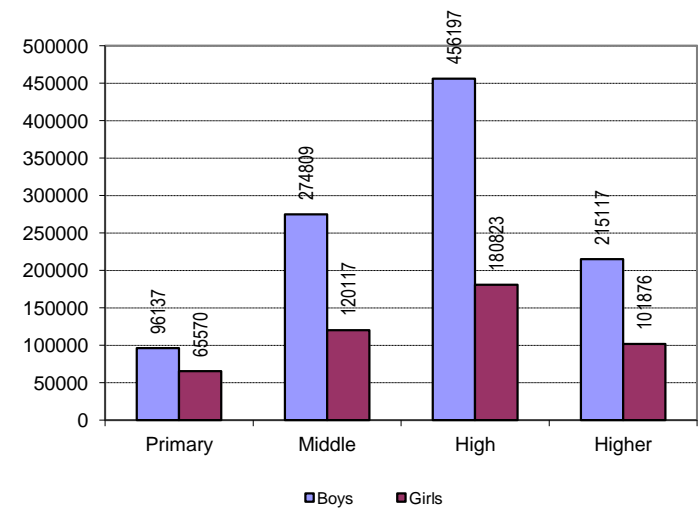
Number of Teachers in Non-Government Schools in Khyber Pakhtunkhwa

Schools	Male	Female	Total
Primary	3500	6428	9928
Middle	10850	13180	24030
High	17644	16220	33864
Higher	8865	8638	17503
Total	40859	44466	85325



Enrolment in Non-Government Schools in Khyber Pakhtunkhwa

Schools	Boys	Girls	Total
Primary	96137	65570	161707
Middle	274809	120117	394926
High	456197	180823	637020
Higher	215117	101876	316993
Total	1042260	468386	1510646



No. of Non Govt Schools, Students, Teaching & Non Teaching Staff by School Level and District

School Level: Primary

District:	No of Schools	Enrolment			Teaching Staff			Non Teaching Staff		
		Boys	Girls	Total	Male	Female	Total	Male	Female	Total
ABBOTTABAD	107	3252	2528	5780	73	513	586	55	97	152
BANNU	59	2650	1945	4595	97	98	195	33	7	40
BATTAGRAM	12	1195	386	1581	49	6	55	9	1	10
BUNNER	26	1132	589	1721	97	9	106	23		23
CHARSADDA	62	3155	2494	5649	107	217	324	35	12	47
CHITRAL	130	2763	3023	5786	109	208	317	19	27	46
D.I.KHAN	177	5620	4462	10082	219	404	623	75	53	128
DIR BALA	19	1125	495	1620	69	22	91	23	2	25
DIR PAYAN	150	3708	4826	8534	164	216	380	52	7	59
HANGU	6	789	231	1020	38	18	56	9	2	11
HARIPUR	127	4426	3865	8291	72	718	790	70	104	174
KARAK	28	1406	474	1880	89	40	129	18	2	20
KOHAT	108	5311	4634	9945	89	321	410	41	41	82
LAKKI	13	864	345	1209	57	11	68	16	2	18
MALAKAND	124	2409	2819	5228	75	175	250	27	11	38
MANSEHRA	74	3218	2500	5718	80	334	414	50	57	107
MARDAN	170	10113	5860	15973	473	575	1048	158	70	228
NOWSHERA	86	4732	3240	7972	163	429	592	64	68	132
PESHAWAR	247	21266	12964	34230	492	1577	2069	287	242	529
SHANGLA	22	2000	492	2492	126	7	133	23	1	24
SWABI	137	6457	4255	10712	323	421	744	126	41	167
SWAT	80	7011	2976	9987	365	98	463	71	12	83
TANK	16	1447	134	1581	72	11	83	19	3	22
TOR GHAR	1	88	33	121	2		2			0
Total	1981	96137	65570	161707	3500	6428	9928	1303	862	2165

No. of Non Govt Schools, Students, Teaching & Non Teaching Staff by School Level and District

School Level: Middle

District:	No of Schools	Enrolment			Teaching Staff			Non Teaching Staff		
		Boys	Girls	Total	Male	Female	Total	Male	Female	Total
ABBOTTABAD	223	15106	12791	27897	329	1816	2145	155	399	554
BANNU	105	16886	3623	20509	666	429	1095	220	50	270
BATTAGRAM	37	5048	863	5911	317	14	331	97	8	105
BUNNER	36	5918	1839	7757	443	40	483	76	6	82
CHARSADDA	113	14455	6287	20742	586	621	1207	153	56	209
CHITRAL	59	3009	2327	5336	184	200	384	24	12	36
D.I.KHAN	188	20522	7104	27626	841	978	1819	253	126	379
DIR BALA	9	1268	136	1404	73	4	77	11	0	11
DIR PAYAN	53	8407	3025	11432	428	92	520	75	6	81
HANGU	22	4242	558	4800	196	13	209	45	2	47
HARIPUR	125	9665	7102	16767	153	1195	1348	104	149	253
KARAK	47	6168	1863	8031	337	140	477	70	14	84
KOHAT	111	12481	5804	18285	384	698	1082	141	83	224
KOHISTAN	7	985	7	992	63		63	13		13
LAKKI	52	6944	1273	8217	386	36	422	81	8	89
MALAKAND	50	7357	2728	10085	273	296	569	68	13	81
MANSEHRA	152	12030	8450	20480	342	1185	1527	141	189	330
MARDAN	134	16873	7085	23958	735	753	1488	245	66	311
NOWSHERA	122	14577	7955	22532	420	932	1352	165	105	270
PESHAWAR	388	49531	25172	74703	1412	2848	4260	515	399	914
SHANGLA	18	2747	397	3144	162	3	165	21		21
SWABI	114	15190	6316	21506	735	592	1327	189	62	251
SWAT	102	16426	5990	22416	958	218	1176	140	22	162
TANK	47	8511	1385	9896	413	77	490	75	15	90
TOR GHAR	2	463	37	500	14		14	1		1
Total	2316	274809	120117	394926	10850	13180	24030	3078	1790	4868

No. of Non Govt Schools, Students, Teaching & Non Teaching Staff by School Level and District

School Level: High

District:	No of Schools	Enrolment			Teaching Staff			Non Teaching Staff		
		Boys	Girls	Total	Male	Female	Total	Male	Female	Total
ABBOTTABAD	143	20255	16264	36519	453	1900	2353	293	373	666
BANNU	40	13549	1729	15278	510	131	641	94	13	107
BATTAGRAM	10	2255	287	2542	121	21	142	52	8	60
BUNNER	36	12299	2944	15243	764	46	810	169	6	175
CHARSADDA	106	30428	11424	41852	1138	960	2098	284	100	384
CHITRAL	63	6320	4858	11178	375	300	675	55	17	72
D.I.KHAN	75	14789	5567	20356	596	674	1270	206	65	271
DIR BALA	20	6266	1509	7775	284	33	317	55	6	61
DIR PAYAN	60	18453	3792	22245	878	125	1003	193	9	202
HANGU	65	19530	2697	22227	719	231	950	142	11	153
HARIPUR	92	14193	10570	24763	276	1423	1699	297	142	439
KARAK	57	11718	3600	15318	654	125	779	125	12	137
KOHAT	81	18357	7923	26280	497	853	1350	194	93	287
KOHISTAN	4	900	10	910	44		44	7		7
LAKKI	32	9539	1550	11089	444	55	499	96	8	104
MALAKAND	34	10003	4573	14576	415	298	713	101	26	127
MANSEHRA	81	12651	8238	20889	409	828	1237	160	162	322
MARDAN	121	37402	12934	50336	1506	1090	2596	481	117	598
NOWSHERA	95	22709	12600	35309	729	1128	1857	368	175	543
PESHAWAR	344	101784	46729	148513	3196	4677	7873	1345	634	1979
SHANGLA	18	5244	981	6225	277		277	56	1	57
SWABI	94	27536	10565	38101	1368	769	2137	375	82	457
SWAT	116	34582	8782	43364	1676	509	2185	327	34	361
TANK	17	5271	676	5947	307	42	349	99	5	104
TOR GHAR	1	164	21	185	8	2	10	1		1
Total	1805	456197	180823	637020	17644	16220	33864	5575	2099	7674

No. of Non Govt Schools, Students, Teaching & Non Teaching Staff by School Level and District

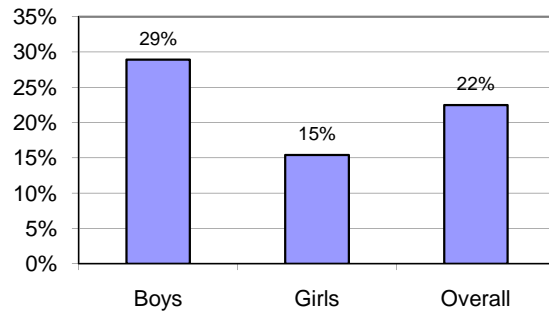
School Level: Higher Secondary/Inter College

District:	No of Schools	Enrolment			Teaching Staff			Non Teaching Staff		
		Boys	Girls	Total	Male	Female	Total	Male	Female	Total
ABBOTTABAD	54	15640	10128	25768	389	1066	1455	291	219	510
BANNU	9	3781	823	4604	177	70	247	77	20	97
BATTAGRAM	8	4744	595	5339	150	40	190	139	26	165
BUNNER	7	4699	1871	6570	274	36	310	97	13	110
CHARSADDA	24	10891	5186	16077	355	351	706	89	35	124
CHITRAL	65	7235	4892	12127	528	367	895	184	43	227
D.I.KHAN	30	9803	3804	13607	422	446	868	301	75	376
DIR BALA	5	1134	627	1761	58	35	93	19	4	23
DIR PAYAN	43	10347	4224	14571	526	236	762	200	48	248
HANGU	13	6380	838	7218	213	55	268	44	1	45
HARIPUR	38	12868	10232	23100	294	1193	1487	271	117	388
KARAK	43	15037	6935	21972	794	256	1050	159	32	191
KOHAT	33	11820	4687	16507	416	464	880	304	49	353
KOHISTAN	4	2542	29	2571	80		80	14		14
LAKKI	10	1713	1236	2949	191	98	289	116	20	136
MALAKAND	8	4933	2847	7780	172	179	351	81	12	93
MANSEHRA	38	8375	5456	13831	279	594	873	146	78	224
MARDAN	33	14687	6565	21252	644	597	1241	264	92	356
NOWSHERA	20	7324	4069	11393	274	394	668	176	80	256
PESHAWAR	67	24859	11964	36823	834	1268	2102	530	178	708
SHANGLA	6	2164	277	2441	123		123	21	1	22
SWABI	29	11124	5414	16538	568	355	923	196	32	228
SWAT	52	21699	9020	30719	1041	525	1566	452	126	578
TANK	2	1318	157	1475	63	13	76	17		17
Total	641	215117	101876	316993	8865	8638	17503	4188	1301	5489
G.Total	6743	1042260	468386	1510646	40859	44466	85325	14144	6052	20196

Enrolment Ratios in Non-Government Primary Stage Schools

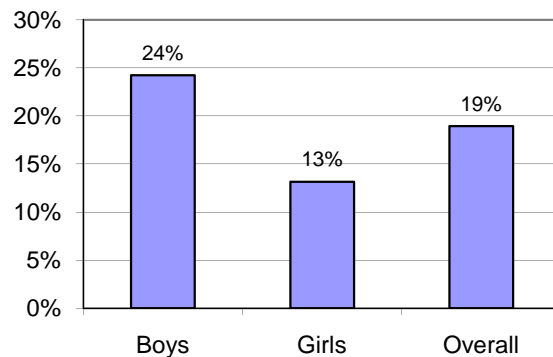
Gross Enrolment Ratio

Gender	Population (5-9)	Enrolment (Prep to CI-5)	GER
Boys	2434924	703984	29%
Girls	2226786	343345	15%
Overall	4661710	1047329	22%



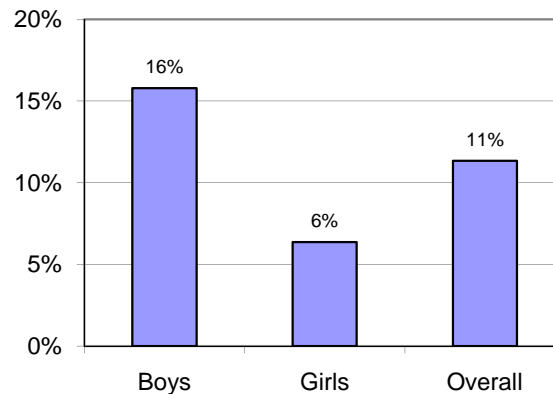
Net Enrolment Ratio

Gender	Population (5-9)	Enrolment Prep to CI-5 Age(5-9)	NER
Boys	2434924	590639	24%
Girls	2226786	293043	13%
Overall	4661710	883682	19%



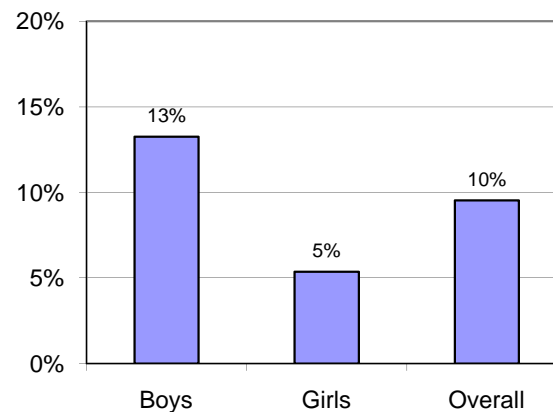
Gross Enrolment Ratio

Gender	Population (10-14)	Enrolment (Class 6-10)	GER
Boys	2006961	316689	16%
Girls	1794583	114348	6%
Overall	3801544	431037	11%



Net Enrolment Ratio

Gender	Population (10-14)	Enrolment (Class 6 to 10) 10-14 Years	GER
Boys	2006961	265966	13%
Girls	1794583	96367	5%
Overall	3801544	362333	10%



Gross Enrolment Ratios in Institutions (Primary Level)

(Based on Population Age Group 5-9)

Year 2012-13		Private Schools			Population (5-9) Years			Pvt Schools (GER)			Gender Parity Index
		Enrol. (Prep to V)						Boys	Girls	Total	
S.#	District	Boys	Girls	Total	Boys	Girls	Total	Boys	Girls	Total	
1	Abbottabad	35036	26906	61942	89742	83238	172980	39%	32%	36%	0.83
2	Bannu	26731	6825	33556	95764	85916	181680	28%	8%	18%	0.28
3	Chitral	10814	7876	18690	40638	38494	79132	27%	20%	24%	0.77
4	Charsadda	40428	18585	59013	140412	126397	266809	29%	15%	22%	0.51
5	D.I.Khan	35792	16732	52524	124866	113423	238289	29%	15%	22%	0.51
6	Dir Lower	24966	12500	37466	115494	107369	222863	22%	12%	17%	0.54
7	Karak	19709	7653	27362	63794	59164	122958	31%	13%	22%	0.42
8	Kohat	31008	17236	48244	76598	71247	147845	40%	24%	33%	0.60
9	Kohistan	2158	42	2200	49800	38152	87952	4%	0.11%	3%	0.03
10	Mansehra	24831	17591	42422	119205	110630	229835	21%	16%	18%	0.76
11	Mardan	55011	25572	80583	200986	183238	384224	27%	14%	21%	0.51
12	Malakand	17168	10178	27346	67335	61918	129253	25%	16%	21%	0.64
13	Nowshera	34842	20671	55513	110558	102447	213005	32%	20%	26%	0.64
14	Peshawar	137009	71645	208654	291396	266883	558279	47%	27%	37%	0.57
15	Swat	54484	20940	75424	188942	173341	362283	29%	12%	21%	0.42
16	Swabi	40751	20583	61334	135413	125674	261087	30%	16%	23%	0.54
17	Buner	16031	5401	21432	82957	75124	158081	19%	7%	14%	0.37
18	Haripur	28196	21744	49940	72035	68162	140197	39%	32%	36%	0.81
19	Lakki	12905	3169	16074	74590	67389	141979	17%	5%	11%	0.27
20	Tank	12491	2026	14517	36004	31489	67493	35%	6%	22%	0.19
21	Battagram	8508	1797	10305	40519	37301	77820	21%	5%	13%	0.23
22	Dir Upper	5964	2078	8042	83282	77990	161272	7%	3%	5%	0.37
23	Hangu	19408	3680	23088	47127	43011	90138	41%	9%	26%	0.21
24	Shangla	9177	1826	11003	65518	59632	125150	14%	3%	9%	0.22
25	Torghar	566	89	655	21949	19157	41106	3%	0%	2%	0.18
Total		703984	343345	1047329	2434924	2226786	4661710	29%	15%	22%	0.53

Net Enrolment Ratios in Non-Govt. Institutions (Primary Level)

(Based on Population Age Group 5-9)

Year 2012-13		Private Schools (5-9) Years			Population (5-9) Years			Pvt Schools (NER)			Gender Parity Index
		Enrol. (Prep to V)									
S.#	District	Boys	Girls	Total	Boys	Girls	Total	Boys	Girls	Total	
1	Abbottabad	28980	22253	51233	89742	83238	172980	32%	27%	30%	0.83
2	Bannu	24372	6374	30746	95764	85916	181680	25%	7%	17%	0.29
3	Chitral	8848	6527	15375	40638	38494	79132	22%	17%	19%	0.78
4	Charsadda	34601	16174	50775	140412	126397	266809	25%	13%	19%	0.52
5	D.I.Khan	29570	14380	43950	124866	113423	238289	24%	13%	18%	0.54
6	Dir Lower	20564	10496	31060	115494	107369	222863	18%	10%	14%	0.55
7	Karak	16488	6649	23137	63794	59164	122958	26%	11%	19%	0.43
8	Kohat	26660	14954	41614	76598	71247	147845	35%	21%	28%	0.60
9	Kohistan	1850	41	1891	49800	38152	87952	4%	0%	2%	0.03
10	Mansehra	20459	14794	35253	119205	110630	229835	17%	13%	15%	0.78
11	Mardan	47099	22267	69366	200986	183238	384224	23%	12%	18%	0.52
12	Malakand	14705	8882	23587	67335	61918	129253	22%	14%	18%	0.66
13	Nowshera	29487	17359	46846	110558	102447	213005	27%	17%	22%	0.64
14	Peshawar	110984	59726	170710	291396	266883	558279	38%	22%	31%	0.59
15	Swat	46291	18221	64512	188942	173341	362283	25%	11%	18%	0.43
16	Swabi	34494	17666	52160	135413	125674	261087	25%	14%	20%	0.55
17	Buner	13269	4739	18008	82957	75124	158081	16%	6%	11%	0.39
18	Haripur	23905	18547	42452	72035	68162	140197	33%	27%	30%	0.82
19	Lakki	10708	2799	13507	74590	67389	141979	14%	4%	10%	0.29
20	Tank	11102	1870	12972	36004	31489	67493	31%	6%	19%	0.19
21	Battagram	6761	1625	8386	40519	37301	77820	17%	4%	11%	0.26
22	Dir Upper	4888	1634	6522	83282	77990	161272	6%	2%	4%	0.36
23	Hangu	16348	3354	19702	47127	43011	90138	35%	8%	22%	0.22
24	Shangla	7750	1624	9374	65518	59632	125150	12%	3%	7%	0.23
25	Torghar	456	88	544	21949	19157	41106	2%	0%	1%	0.22
Total		590639	293043	883682	2434924	2226786	4661710	24%	13%	19%	0.54

Gross Enrolment Ratios in Non-Govt. (Middle,High and H/Sec.) Schools

(Based on Population Age Group 10-14)

Year 2012-13		Private Schools			Population (10-14) Years			Private Schools(G E R)			Gender Parity Index
		Enrolment (6 to 10)						Boys	Girls	Total	
S.#	District	Boys	Girls	Total	Boys	Girls	Total	Boys	Girls	Total	
1	Abbottabad	17810	13713	31523	84757	80274	165031	21%	17%	19%	0.81
2	Bannu	9802	1268	11070	66035	57502	123537	15%	2%	9%	0.15
3	Chitral	7366	5645	13011	29400	28435	57835	25%	20%	22%	0.79
4	Charsadda	17429	5953	23382	112503	98610	211113	15%	6%	11%	0.39
5	D.I.Khan	13648	3761	17409	95431	84174	179605	14%	4%	10%	0.31
6	Dir Lower	13830	2668	16498	86579	80393	166972	16%	3%	10%	0.21
7	Karak	12996	4254	17250	51006	47597	98603	25%	9%	17%	0.35
8	Kohat	14908	5033	19941	67686	62443	130129	22%	8%	15%	0.37
9	Kohistan	1665	3	1668	45662	25999	71661	4%	0.0%	2%	0.00
10	Mansehra	10651	6547	17198	104721	97112	201833	10%	7%	9%	0.66
11	Mardan	22760	6693	29453	168271	150937	319208	14%	4%	9%	0.33
12	Malakand	7251	2566	9817	54881	49925	104806	13%	5%	9%	0.39
13	Nowshera	13955	6894	20849	95450	88026	183476	15%	8%	11%	0.54
14	Peshawar	59401	24327	83728	249004	226632	475636	24%	11%	18%	0.45
15	Swat	23809	5333	29142	158906	139813	298719	15%	4%	10%	0.25
16	Swabi	18252	5576	23828	114033	102542	216575	16%	5%	11%	0.34
17	Buner	7931	1721	9652	64523	56492	121015	12%	3%	8%	0.25
18	Haripur	11832	9212	21044	67753	64508	132261	17%	14%	16%	0.82
19	Lakki	6071	966	7037	52431	45271	97702	12%	2%	7%	0.18
20	Tank	3940	323	4263	27277	22179	49456	14%	1%	9%	0.10
21	Battagram	4040	303	4343	32859	28803	61662	12%	1%	7%	0.09
22	Dir Upper	3579	663	4242	67410	60650	128060	5%	1.1%	3%	0.21
23	Hangu	10819	615	11434	39071	34694	73765	28%	2%	16%	0.06
24	Shangla	2795	309	3104	52030	44756	96786	5%	0.7%	3%	0.13
25	Torghar	149	2	151	19282	16816	36098	1%	0.0%	0%	0.02
TOTAL		316689	114348	431037	2006961	1794583	3801544	16%	6%	11%	0.40

Net Enrolment Ratios in Non-Govt. (Middle,High and H/Sec.) Schools

(Based on Population Age Group 10-14)

Year 2012-13		Private Schools (10-14) Years			Population (10-14) Years			Private Schools(N E R)			Gender Parity Index
		Enrolment (6 to 10)			Boys	Girls	Total	Boys	Girls	Total	
S.#	District	Boys	Girls	Total	Boys	Girls	Total	Boys	Girls	Total	
1	Abbottabad	14628	11296	25924	84757	80274	165031	17%	14%	16%	0.82
2	Bannu	9214	1170	10384	66035	57502	123537	14%	2%	8%	0.15
3	Chitral	5727	4371	10098	29400	28435	57835	19%	15%	17%	0.79
4	Charsadda	14973	5069	20042	112503	98610	211113	13%	5%	9%	0.39
5	D.I.Khan	11543	3142	14685	95431	84174	179605	12%	4%	8%	0.31
6	Dir Lower	11196	2210	13406	86579	80393	166972	13%	3%	8%	0.21
7	Karak	11114	3490	14604	51006	47597	98603	22%	7%	15%	0.34
8	Kohat	12960	4390	17350	67686	62443	130129	19%	7%	13%	0.37
9	Kohistan	1210	1	1211	45662	25999	71661	3%	0.0%	2%	0.00
10	Mansehra	8906	5493	14399	104721	97112	201833	9%	6%	7%	0.67
11	Mardan	19440	5849	25289	168271	150937	319208	12%	4%	8%	0.34
12	Malakand	6138	2129	8267	54881	49925	104806	11%	4%	8%	0.38
13	Nowshera	11738	5764	17502	95450	88026	183476	12%	7%	10%	0.53
14	Peshawar	48626	20475	69101	249004	226632	475636	20%	9%	15%	0.46
15	Swat	19839	4565	24404	158906	139813	298719	12%	3%	8%	0.26
16	Swabi	15801	4940	20741	114033	102542	216575	14%	5%	10%	0.35
17	Buner	6592	1393	7985	64523	56492	121015	10%	2%	7%	0.24
18	Haripur	10083	7901	17984	67753	64508	132261	15%	12%	14%	0.82
19	Lakki	5124	776	5900	52431	45271	97702	10%	2%	6%	0.18
20	Tank	3501	280	3781	27277	22179	49456	13%	1%	8%	0.10
21	Battagram	3233	263	3496	32859	28803	61662	10%	1%	6%	0.09
22	Dir Upper	2840	588	3428	67410	60650	128060	4%	1.0%	3%	0.23
23	Hangu	9203	549	9752	39071	34694	73765	24%	2%	13%	0.07
24	Shangla	2189	261	2450	52030	44756	96786	4%	0.6%	3%	0.14
25	Torghar	148	2	150	19282	16816	36098	1%	0.0%	0%	0.02
TOTAL		265966	96367	362333	2006961	1794583	3801544	13%	5%	10%	0.41

Summary of Schools, Students, Teaching & Non Teaching Staff by Districts

Name of District	No. of Schools	Enrolment			Teaching Staff			Non Teaching Staff		
		Boys	Girls	Total	Male	Female	Total	Male	Female	Total
ABBOTTABAD	527	54253	41711	95964	1244	5295	6539	794	1088	1882
BANNU	213	36866	8120	44986	1450	728	2178	424	90	514
BATTAGRAM	67	13242	2131	15373	637	81	718	297	43	340
BUNNER	105	24048	7243	31291	1578	131	1709	365	25	390
CHARSADDA	305	58929	25391	84320	2186	2149	4335	561	203	764
CHITRAL	317	19327	15100	34427	1196	1075	2271	282	99	381
D.I.KHAN	470	50734	20937	71671	2078	2502	4580	835	319	1154
DIR BALA	53	9793	2767	12560	484	94	578	108	12	120
DIR PAYAN	306	40915	15867	56782	1996	669	2665	520	70	590
HANGU	106	30941	4324	35265	1166	317	1483	240	16	256
HARIPUR	382	41152	31769	72921	795	4529	5324	742	512	1254
KARAK	175	34329	12872	47201	1874	561	2435	372	60	432
KOHAT	333	47969	23048	71017	1386	2336	3722	680	266	946
KOHISTAN	15	4427	46	4473	187		187	34		34
LAKKI	107	19060	4404	23464	1078	200	1278	309	38	347
MALAKAND	216	24702	12967	37669	935	948	1883	277	62	339
MANSEHRA	345	36274	24644	60918	1110	2941	4051	497	486	983
MARDAN	458	79075	32444	111519	3358	3015	6373	1148	345	1493
NOWSHERA	323	49342	27864	77206	1586	2883	4469	773	428	1201
PESHAWAR	1046	197440	96829	294269	5934	10370	16304	2677	1453	4130
SHANGLA	64	12155	2147	14302	688	10	698	121	3	124
SWABI	374	60307	26550	86857	2994	2137	5131	886	217	1103
SWAT	350	79718	26768	106486	4040	1350	5390	990	194	1184
TANK	82	16547	2352	18899	855	143	998	210	23	233
TOR GHAR	4	715	91	806	24	2	26	2		2
Grand Total	6743	1042260	468386	1510646	40859	44466	85325	14144	6052	20196

Summary of Schools, Students, Teaching & Non Teaching Staff by School Type

School Type	No. of Schools	Enrolment			Teaching Staff			Non Teaching Staff		
		Boys	Girls	Total	Male	Female	Total	Male	Female	Total
Private	5482	937497	390365	1327862	36802	38571	75373	11606	5279	16885
Semi Government	31	6074	1985	8059	210	268	478	159	31	190
University Schools	32	10347	4955	15302	390	450	840	271	60	331
Benevolent Fund	2	409	242	651	6	30	36	2	23	25
Elementary Education Foun	178	3097	7595	10692	45	280	325	10	10	20
Frontier Education Foundati	6	30	676	706	15	75	90	33	24	57
Fauji Foundation	9	2117	799	2916	83	89	172	28	33	61
OPF	4	921	479	1400	50	59	109	33	9	42
District/City Govt.	4	1337	2371	3708	57	65	122	42	11	53
Police	58	8114	4249	12363	298	416	714	85	44	129
Workers Welfare Board	21	6779	3920	10699	749	572	1321	690	147	837
Public Private Collaboration	39	5354	2005	7359	224	214	438	53	32	85
Federal Government	39	6853	6160	13013	299	320	619	257	35	292
Army	18	6694	3803	10497	165	561	726	163	64	227
P.A.F	1	1301	528	1829	21	81	102	40	1	41
Cantonment Board	1	189	137	326	1	12	13	4	4	8
WAPDA	6	2038	1729	3767	57	105	162	36	13	49
Pak Bait-ul-Mal	5	341	185	526	11	17	28	6	3	9
National Education Foundati	545	8998	15039	24037	154	641	795	29	39	68
Telecom Foundation	9	1042	1582	2624	42	106	148	55	19	74
Missionary	17	5443	2424	7867	104	275	379	95	15	110
UNICEF	1	0	104	104	0	1	1	0	0	0
Agha Khan Education Syste	53	2774	4715	7489	176	174	350	26	11	37
The Citizen's Foundation	14	2441	1750	4191	24	182	206	82	51	133
Mercy Pak International Sch	13	2024	730	2754	28	78	106	14	11	25
Bacha Khan Education Syst	16	1688	941	2629	62	138	200	51	17	68
Any Other	139	18358	8918	27276	786	686	1472	274	66	340
Grand Total	6743	1042260	468386	1510646	40859	44466	85325	14144	6052	20196

No. of Non Govt. Schools Having Basic Facilities

School Level: Primary

District	No. of Schools	Water		Latrine		B_Wall		Electricity		P-Ground		Transport	
		Yes	%age	Yes	%age	Yes	%age	Yes	%age	Yes	%age	Yes	%age
ABBOTTABAD	107	98	92%	91	85%	68	64%	85	79%	59	55%	12	11%
BANNU	59	59	100%	53	90%	56	95%	58	98%	11	19%	3	5%
BATTAGRAM	12	9	75%	10	83%	7	58%	8	67%	9	75%	3	25%
BUNNER	26	24	92%	15	58%	21	81%	20	77%	9	35%	2	8%
CHARSADDA	62	62	100%	59	95%	61	98%	60	97%	36	58%	3	5%
CHITRAL	130	100	77%	100	77%	71	55%	75	58%	26	20%	2	2%
D.I.KHAN	177	171	97%	162	92%	170	96%	168	95%	58	33%	2	1%
DIR BALA	19	12	63%	12	63%	9	47%	13	68%	9	47%	2	11%
DIR PAYAN	150	126	84%	114	76%	121	81%	110	73%	27	18%	10	7%
HANGU	6	6	100%	6	100%	6	100%	6	100%	4	67%	0	0%
HARIPUR	127	121	95%	117	92%	118	93%	120	94%	90	71%	13	10%
KARAK	28	27	96%	19	68%	21	75%	25	89%	12	43%	2	7%
KOHAT	108	103	95%	101	94%	106	98%	103	95%	47	44%	3	3%
LAKKI	13	12	92%	13	100%	12	92%	13	100%	10	77%	2	15%
MALAKAND	124	80	65%	77	62%	79	64%	80	65%	23	19%	4	3%
MANSEHRA	74	66	89%	66	89%	66	89%	64	86%	57	77%	7	9%
MARDAN	170	168	99%	167	98%	165	97%	167	98%	105	62%	17	10%
NOWSHERA	86	83	97%	83	97%	83	97%	84	98%	56	65%	6	7%
PESHAWAR	247	241	98%	243	98%	246	100%	243	98%	132	53%	30	12%
SHANGLA	22	21	95%	15	68%	13	59%	17	77%	17	77%	0	0%
SWABI	137	134	98%	132	96%	135	99%	134	98%	62	45%	16	12%
SWAT	80	70	88%	59	74%	57	71%	60	75%	38	48%	12	15%
TANK	16	16	100%	16	100%	16	100%	16	100%	11	69%	0	0%
TOR GHAR	1	0	0%	0	0%	1	100%	0	0%	0	0%	0	0%

No. of Non Govt. Schools Having Basic Facilities

School Level: Middle

District	No. of Schools	Water		Latrine		B_Wall		Electricity		P-Ground		Transport	
		Yes	%age	Yes	%age	Yes	%age	Yes	%age	Yes	%age	Yes	%age
ABBOTTABAD	223	216	97%	215	96%	177	79%	197	88%	166	74%	24	11%
BANNU	105	104	99%	104	99%	105	100%	105	100%	69	66%	19	18%
BATTAGRAM	37	36	97%	35	95%	34	92%	35	95%	33	89%	13	35%
BUNNER	36	35	97%	36	100%	33	92%	33	92%	31	86%	16	44%
CHARSADDA	113	113	100%	112	99%	111	98%	113	100%	89	79%	23	20%
CHITRAL	59	50	85%	54	92%	37	63%	34	58%	31	53%	2	3%
D.I.KHAN	188	188	100%	183	97%	186	99%	186	99%	135	72%	16	9%
DIR BALA	9	7	78%	7	78%	7	78%	6	67%	5	56%	3	33%
DIR PAYAN	53	43	81%	45	85%	50	94%	49	92%	28	53%	13	25%
HANGU	22	22	100%	22	100%	21	95%	22	100%	20	91%	2	9%
HARIPUR	125	123	98%	124	99%	124	99%	122	98%	106	85%	25	20%
KARAK	47	46	98%	46	98%	45	96%	45	96%	37	79%	6	13%
KOHAT	111	110	99%	110	99%	108	97%	109	98%	85	77%	10	9%
KOHISTAN	7	7	100%	7	100%	7	100%	7	100%	3	43%	0	0%
LAKKI	52	49	94%	48	92%	51	98%	51	98%	38	73%	5	10%
MALAKAND	50	49	98%	48	96%	49	98%	47	94%	35	70%	8	16%
MANSEHRA	152	152	100%	149	98%	144	95%	144	95%	131	86%	28	18%
MARDAN	134	134	100%	133	99%	132	99%	133	99%	98	73%	27	20%
NOWSHERA	122	120	98%	119	98%	117	96%	120	98%	88	72%	17	14%
PESHAWAR	388	387	100%	382	98%	378	97%	385	99%	260	67%	79	20%
SHANGLA	18	14	78%	15	83%	11	61%	14	78%	13	72%	0	0%
SWABI	114	114	100%	114	100%	113	99%	114	100%	82	72%	34	30%
SWAT	102	94	92%	98	96%	95	93%	97	95%	68	67%	19	19%
TANK	47	45	96%	45	96%	46	98%	46	98%	36	77%	2	4%
TOR GHAR	2	2	100%	2	100%	1	50%	1	50%	1	50%	0	0%

No. of Non Govt Schools, Non-Teaching Staff and Rooms by School Level and District

School Level: Primary

District:	No of Schools	Rooms				Non Teaching Staff		
		Sch Boys	Sch Girls	Co-Edu	Total	Male	Female	Total
ABBOTTABAD	107	5		501	506	55	97	152
BANNU	59	11	14	179	204	33	7	40
BATTAGRAM	12			81	81	9	1	10
BUNNER	26	4	7	115	126	23		23
CHARSADDA	62		7	266	273	35	12	47
CHITRAL	130	1	28	327	356	19	27	46
D.I.KHAN	177	18	23	609	650	75	53	128
DIR BALA	19	11	4	83	98	23	2	25
DIR PAYAN	150	8	96	290	394	52	7	59
HANGU	6	12	6	37	55	9	2	11
HARIPUR	127			712	712	70	104	174
KARAK	28	4		145	149	18	2	20
KOHAT	108	8	2	386	396	41	41	82
LAKKI	13	3		71	74	16	2	18
MALAKAND	124		7	258	265	27	11	38
MANSEHRA	74	4		381	385	50	57	107
MARDAN	170	20	1	994	1015	158	70	228
NOWSHERA	86			514	514	64	68	132
PESHAWAR	247	79	38	1680	1797	287	242	529
SHANGLA	22		4	128	132	23	1	24
SWABI	137	14	2	759	775	126	41	167
SWAT	80	13	5	436	454	71	12	83
TANK	16	22		66	88	19	3	22
TOR GHAR	1			2	2			0
Total by Level	1981	237	244	9023	9504	1303	862	2165

No. of Non Govt Schools, Non-Teaching Staff and Rooms by School Level and District

School Level: Middle

District:	No of Schools	Rooms				Non Teaching Staff		
		Sch Boys	Sch Girls	Co-Edu	Total	Male	Female	Total
ABBOTTABAD	223		2	1813	1815	155	399	554
BANNU	105	139	22	917	1078	220	50	270
BATTAGRAM	37	16		340	356	97	8	105
BUNNER	36		24	433	457	76	6	82
CHARSADDA	113	33	10	998	1041	153	56	209
CHITRAL	59	5	13	354	372	24	12	36
D.I.KHAN	188	33	5	1597	1635	253	126	379
DIR BALA	9	20		52	72	11	0	11
DIR PAYAN	53	80	37	354	471	75	6	81
HANGU	22	44	10	167	221	45	2	47
HARIPUR	125	20		1143	1163	104	149	253
KARAK	47	29		425	454	70	14	84
KOHAT	111	28		951	979	141	83	224
KOHISTAN	7	39		9	48	13		13
LAKKI	52	86	14	340	440	81	8	89
MALAKAND	50	25	9	436	470	68	13	81
MANSEHRA	152			1328	1328	141	189	330
MARDAN	134	204	33	1197	1434	245	66	311
NOWSHERA	122	4		1195	1199	165	105	270
PESHAWAR	388	187	76	3443	3706	515	399	914
SHANGLA	18	15	7	141	163	21		21
SWABI	114	23		1277	1300	189	62	251
SWAT	102	43	7	1039	1089	140	22	162
TANK	47	30		418	448	75	15	90
TOR GHAR	2			20	20	1		1
Total by Level	2316	1103	269	20387	21759	3078	1790	4868

No. of Non Govt Schools, Non-Teaching Staff and Rooms by School Level and District

School Level: High

District:	No of Schools	Rooms				Non Teaching Staff		
		Sch Boys	Sch Girls	Co-Edu	Total	Male	Female	Total
ABBOTTABAD	143	13	16	1970	1999	293	373	666
BANNU	40	284	30	255	569	94	13	107
BATTAGRAM	10	20		114	134	52	8	60
BUNNER	36			767	767	169	6	175
CHARSADDA	106	42	30	1661	1733	284	100	384
CHITRAL	63	10	36	558	604	55	17	72
D.I.KHAN	75	38	50	1005	1093	206	65	271
DIR BALA	20	89	29	164	282	55	6	61
DIR PAYAN	60	224	54	523	801	193	9	202
HANGU	65	209	10	651	870	142	11	153
HARIPUR	92	70	30	1389	1489	297	142	439
KARAK	57	22		676	698	125	12	137
KOHAT	81	28	32	1093	1153	194	93	287
KOHISTAN	4	19		19	38	7		7
LAKKI	32	114	32	297	443	96	8	104
MALAKAND	34	14	12	532	558	101	26	127
MANSEHRA	81	5	30	1116	1151	160	162	322
MARDAN	121	256	22	1854	2132	481	117	598
NOWSHERA	95	128	34	1439	1601	368	175	543
PESHAWAR	344	1078	610	4456	6144	1345	634	1979
SHANGLA	18	23		208	231	56	1	57
SWABI	94	183	85	1633	1901	375	82	457
SWAT	116	86	26	1876	1988	327	34	361
TANK	17	82		216	298	99	5	104
TOR GHAR	1			8	8	1		1
Total by Level	1805	3037	1168	24477	28682	5575	2099	7674

No. of Non Govt Schools, Non-Teaching Staff and Rooms by School Level and District

School Level: Higher Secondary/Inter College

District:	No of Schools	Rooms				Non Teaching Staff		
		Sch Boys	Sch Girls	Co-Edu	Total	Male	Female	Total
ABBOTTABAD	54	24	16	1333	1373	291	219	510
BANNU	9	105	6	74	185	77	20	97
BATTAGRAM	8	24		166	190	139	26	165
BUNNER	7	60	19	166	245	97	13	110
CHARSADDA	24	29	17	551	597	89	35	124
CHITRAL	65	32	56	732	820	184	43	227
D.I.KHAN	30	101	70	402	573	301	75	376
DIR BALA	5	18		44	62	19	4	23
DIR PAYAN	43	213	102	395	710	200	48	248
HANGU	13	32	12	191	235	44	1	45
HARIPUR	38	16	10	1055	1081	271	117	388
KARAK	43	26	37	803	866	159	32	191
KOHAT	33	97	25	590	712	304	49	353
KOHISTAN	4	30		35	65	14		14
LAKKI	10	41	36	98	175	116	20	136
MALAKAND	8	64	21	245	330	81	12	93
MANSEHRA	38	22	10	855	887	146	78	224
MARDAN	33	114	39	752	905	264	92	356
NOWSHERA	20		42	562	604	176	80	256
PESHAWAR	67	438	249	915	1602	530	178	708
SHANGLA	6			154	154	21	1	22
SWABI	29	32	24	789	845	196	32	228
SWAT	52	115	51	1165	1331	452	126	578
TANK	2	28		29	57	17		17
Total by Level	641	1661	842	12101	14604	4188	1301	5489
G.Total	6743	6038	2523	65988	74549	14144	6052	20196

Classwise(Play Group to Class 5) Enrolment by Gender and District

District:	Boys									Girls									G.Total
	P-Grp	Nry	Prep	CI-1	CI-2	CI-3	CI-4	CI-5	Total	P-Grp	Nry	Prep	CI-1	CI-2	CI-3	CI-4	CI-5	Total	
ABBOTTABAD	1979	7035	6590	6216	5856	5496	5628	5250	35036	1437	5565	5068	4891	4365	4262	4265	4055	26906	61942
BANNU	1178	5148	5113	5023	4625	4236	3916	3818	26731	458	1541	1514	1509	1240	999	846	717	6825	33556
BATTAGRAM	214	1235	1448	1449	1857	1389	1247	1118	8508	90	415	472	368	370	252	209	126	1797	10305
BUNNER	306	2929	3199	2978	2575	2484	2448	2347	16031	118	1051	1278	1170	852	769	735	597	5401	21432
CHARSADDA	3751	8017	8015	7327	7017	6486	6052	5531	40428	1914	4329	4289	3678	3095	2912	2485	2126	18585	59013
CHITRAL	147	1063	1605	1842	1757	1827	1979	1804	10814	125	661	1237	1352	1254	1256	1423	1354	7876	18690
D.I.KHAN	2624	7375	7603	7063	5872	5668	4941	4645	35792	1478	3484	3349	3669	2919	2631	2229	1935	16732	52524
DIR BALA	248	1229	1144	1040	990	976	918	896	5964	99	499	444	378	347	328	319	262	2078	8042
DIR PAYAN	988	3383	4316	4543	4218	4119	3931	3839	24966	513	1985	2299	2701	2370	1940	1653	1537	12500	37466
HANGU	219	2906	3300	3461	3248	3293	3161	2945	19408	39	876	862	822	675	564	446	311	3680	23088
HARIPUR	1479	5708	5292	4996	4984	4510	4136	4278	28196	1192	4374	4108	3946	3780	3389	3316	3205	21744	49940
KARAK	655	2815	3387	3583	3267	3162	3045	3265	19709	288	1275	1373	1418	1350	1248	1248	1016	7653	27362
KOHAT	1292	6139	5748	5782	5320	5031	4763	4364	31008	803	3291	3194	3315	3045	2791	2644	2247	17236	48244
KOHISTAN	63	136	341	393	391	359	348	326	2158	7	7	10	11	11	8	2		42	2200
LAKKI	558	2146	2440	2441	2201	1971	1932	1920	12905	229	744	716	662	574	503	401	313	3169	16074
MALAKAND	800	2958	3274	3268	2833	2763	2607	2423	17168	452	1764	1982	2070	1697	1684	1460	1285	10178	27346
MANSEHRA	1486	5130	4821	4553	4188	3911	3767	3591	24831	1075	3594	3631	3216	2922	2712	2766	2344	17591	42422
MARDAN	3109	10742	11056	10270	9409	8814	8227	7235	55011	1735	5389	5322	5074	4500	4051	3551	3074	25572	80583
NOWSHERA	2908	6862	6518	6743	5913	5716	5204	4748	34842	1759	4543	4290	4194	3606	3247	2876	2458	20671	55513
PESHAWAR	9649	27740	27027	25876	23319	21347	20127	19313	137009	5222	14424	15170	14029	12667	11259	9591	8929	71645	208654
SHANGLA	152	1607	1725	1899	1637	1547	1223	1146	9177	40	388	400	414	352	261	216	183	1826	11003
SWABI	2124	7707	7682	7540	6875	6659	6274	5721	40751	1141	4273	4244	4000	3522	3276	2924	2617	20583	61334
SWAT	626	9644	10469	10541	9426	8691	7959	7398	54484	337	4438	4624	4417	3643	3194	2767	2295	20940	75424
TANK	556	2366	2932	2569	2103	1912	1620	1355	12491	138	505	573	486	341	269	208	149	2026	14517
TOR GHAR	10	110	184	135	72	66	52	57	566	33	13	37	19	23	4	6		89	655
G.Total	37121	132130	135229	131531	119953	112433	105505	99333	703984	20722	69428	70486	67809	59520	53809	48586	43135	343345	1047329

Note: Play Group and Nursery students are excluded in the Total.

Classwise(Class 6 to 12) Enrolment by Gender and District

District:	Boys										Girls										G.Total
	CI-6	CI-7	CI-8	CI-9	CI-10	Total(6-10)	CI-11	CI-12	Total(11-12)	Total	CI-6	CI-7	CI-8	CI-9	CI-10	Total(6-10)	CI-11	CI-12	Total(11-12)	Total	
ABBOTTABAD	4701	4073	3394	2929	2713	17810	688	719	1407	19217	3485	3029	2845	2322	2032	13713	511	581	1092	14805	34022
BANNU	2929	2470	2085	1306	1012	9802	186	147	333	10135	410	339	261	135	123	1268	16	11	27	1295	11430
BATTAGRAM	1081	879	748	761	571	4040	311	383	694	4734	85	72	79	32	35	303	17	14	31	334	5068
BUNNER	2335	1763	1511	1255	1067	7931	32	54	86	8017	504	393	316	287	221	1721	65	56	121	1842	9859
CHARSADDA	4554	4008	3335	2925	2607	17429	649	423	1072	18501	1620	1320	1120	1025	868	5953	457	396	853	6806	25307
CHITRAL	1621	1541	1492	1438	1274	7366	540	607	1147	8513	1079	1031	1118	1249	1168	5645	871	708	1579	7224	15737
D.I.KHAN	3645	3144	2771	2198	1890	13648	723	571	1294	14942	1041	841	677	641	561	3761	251	193	444	4205	19147
DIR BALA	963	745	734	634	503	3579	140	110	250	3829	205	126	124	134	74	663	14	12	26	689	4518
DIR PAYAN	3347	3070	2748	2507	2158	13830	1214	905	2119	15949	780	601	515	465	307	2668	389	310	699	3367	19316
HANGU	2869	2764	2100	1742	1344	10819	345	369	714	11533	200	168	115	63	69	615	20	9	29	644	12177
HARIPUR	3257	2652	2403	1893	1627	11832	572	552	1124	12956	2457	2120	1861	1550	1224	9212	436	377	813	10025	22981
KARAK	3137	2715	2634	2359	2151	12996	795	829	1624	14620	1055	836	717	825	821	4254	442	523	965	5219	19839
KOHAT	3602	3438	3243	2499	2126	14908	1100	953	2053	16961	1369	1160	1002	813	689	5033	480	299	779	5812	22773
KOHISTAN	316	309	280	368	392	1665	328	276	604	2269	1			1	1	3	1		1	4	2273
LAKKI	1792	1433	1123	940	783	6071	53	31	84	6155	282	212	174	136	162	966	114	155	269	1235	7390
MALAKAND	1926	1671	1517	1155	982	7251	159	124	283	7534	689	564	465	446	402	2566	60	163	223	2789	10323
MANSEHRA	2858	2320	2220	1749	1504	10651	539	253	792	11443	1842	1582	1280	984	859	6547	229	277	506	7053	18496
MARDAN	5748	5311	4776	3963	2962	22760	621	683	1304	24064	1977	1548	1308	1045	815	6693	61	118	179	6872	30936
NOWSHERA	3601	3063	2768	2628	1895	13955	275	270	545	14500	1929	1461	1328	1216	960	6894	186	113	299	7193	21693
PESHAWAR	15745	13328	12221	9928	8179	59401	592	438	1030	60431	6924	5161	4647	4157	3438	24327	410	447	857	25184	85615
SHANGLA	736	654	571	441	393	2795	91	92	183	2978	76	90	52	61	30	309	6	6	12	321	3299
SWABI	4722	4275	3787	2992	2476	18252	741	563	1304	19556	1669	1302	1056	854	695	5576	199	192	391	5967	25523
SWAT	5845	5283	4926	4214	3541	23809	613	812	1425	25234	1643	1260	988	831	611	5333	194	301	495	5828	31062
TANK	1172	971	819	551	427	3940	54	62	116	4056	95	68	62	54	44	323	2	1	3	326	4382
TOR GHAR	61	45	34	9		149			0	149	2					2			0	2	151
G.Total	82563	71925	64240	53384	44577	316689	11361	10226	21587	338276	31419	25284	22110	19326	16209	114348	5431	5262	10693	125041	463317

Classwise(Play Group to Class 5) Enrolment by School Level and District

School Level: Primary

District:	Boys									Girls									G.Total
	P-Grp	Nry	Prep	CI-1	CI-2	CI-3	CI-4	CI-5	Total	P-Grp	Nry	Prep	CI-1	CI-2	CI-3	CI-4	CI-5	Total	
ABBOTTABAD	379	1013	786	660	563	483	436	324	3252	259	736	621	514	454	389	304	246	2528	5780
BANNU	201	592	546	519	518	433	335	299	2650	102	353	387	431	356	304	261	206	1945	4595
BATTAGRAM	76	113	269	165	521	101	74	65	1195	16	64	140	66	118	28	20	14	386	1581
BUNNER	24	288	357	237	183	142	113	100	1132	17	111	186	163	91	68	47	34	589	1721
CHARSADDA	551	907	871	647	571	456	354	256	3155	315	605	725	523	396	366	274	210	2494	5649
CHITRAL	53	367	469	548	482	460	480	324	2763	48	261	503	512	476	511	542	479	3023	5786
D.I.KHAN	545	1282	1398	1334	903	762	659	564	5620	334	626	729	1156	801	675	569	532	4462	10082
DIR BALA	28	301	299	218	220	175	118	95	1125	38	100	120	80	78	85	86	46	495	1620
DIR PAYAN	381	680	765	783	751	545	493	371	3708	203	695	879	1101	994	730	553	569	4826	8534
HANGU		172	142	147	144	139	148	69	789		53	60	49	45	39	19	19	231	1020
HARIPUR	422	1171	1012	910	764	641	584	515	4426	352	937	833	773	689	569	508	493	3865	8291
KARAK	110	338	296	321	238	228	174	149	1406	8	105	136	88	71	72	74	33	474	1880
KOHAT	239	1148	1142	1053	907	899	791	519	5311	193	871	848	957	784	780	707	558	4634	9945
LAKKI	48	245	199	210	162	119	104	70	864	24	86	69	77	62	57	57	23	345	1209
MALAKAND	196	463	556	606	438	342	279	188	2409	125	375	460	700	491	503	385	280	2819	5228
MANSEHRA	308	669	806	718	605	427	379	283	3218	191	413	599	553	406	380	317	245	2500	5718
MARDAN	734	2562	2439	2106	1834	1502	1256	976	10113	433	1349	1421	1296	1098	923	633	489	5860	15973
NOWSHERA	493	1270	1107	1021	866	787	558	393	4732	311	863	772	712	583	498	375	300	3240	7972
PESHAWAR	2075	4979	5056	4506	3853	3273	2612	1966	21266	1189	3155	3157	2798	2267	2023	1398	1321	12964	34230
SHANGLA	95	577	536	488	362	332	145	137	2000	24	140	128	154	74	44	35	57	492	2492
SWABI	415	1637	1599	1437	1088	940	775	618	6457	286	1066	1123	910	728	646	479	369	4255	10712
SWAT	110	1463	1659	1501	1154	1042	903	752	7011	49	647	739	730	483	424	372	228	2976	9987
TANK	131	376	406	349	254	189	145	104	1447	20	54	59	34	14	11	9	7	134	1581
TOR GHAR	10		20	19	15	13	13	8	88	8		10	8	6	4	5		33	121
Total by Level	7624	22613	22735	20503	17396	14430	11928	9145	96137	4545	13665	14704	14385	11565	10129	8029	6758	65570	161707

Note: Play Group and Nursery Students are excluded

Classwise(Play Group to Class 5) Enrolment by School Level and District

School Level: Middle

District:	Boys									Girls									G.Total
	P-Grp	Nry	Prep	CI-1	CI-2	CI-3	CI-4	CI-5	Total	P-Grp	Nry	Prep	CI-1	CI-2	CI-3	CI-4	CI-5	Total	
ABBOTTABAD	650	2749	2449	2226	1971	1830	1826	1716	12018	491	2221	1902	1833	1558	1511	1479	1449	9732	21750
BANNU	545	2638	2757	2713	2311	2140	1940	1905	13766	203	823	772	755	581	458	368	296	3230	16996
BATTAGRAM	110	674	750	754	743	690	615	479	4031	46	206	207	189	156	112	84	45	793	4824
BUNNER	159	941	1030	990	779	693	744	581	4817	73	379	418	363	265	223	203	163	1635	6452
CHARSADDA	1179	2794	3004	2465	2072	1898	1626	1433	12498	642	1538	1367	1202	967	851	708	555	5650	18148
CHITRAL	23	196	263	364	324	364	434	394	2143	29	121	243	254	209	247	283	267	1503	3646
D.I.KHAN	1452	4037	3916	3603	2916	2813	2360	1945	17553	777	1715	1560	1384	1075	1014	758	606	6397	23950
DIR BALA	48	191	176	195	151	160	163	160	1005	6	51	29	24	23	10	16	20	122	1127
DIR PAYAN	235	845	1068	1376	1267	1107	1062	975	6855	73	388	410	683	507	431	390	294	2715	9570
HANGU	22	498	559	558	552	608	543	490	3310		118	149	115	71	104	43	30	512	3822
HARIPUR	375	1804	1638	1527	1537	1242	1160	1047	8151	309	1379	1219	1094	993	892	815	775	5788	13939
KARAK	124	785	933	876	803	725	684	701	4722	53	300	324	301	274	267	243	188	1597	6319
KOHAT	419	2346	2125	2068	1829	1597	1427	1302	10348	237	1213	1149	1053	949	804	718	565	5238	15586
KOHISTAN	13	35	156	148	121	107	122	102	756	2	3		5		2			7	763
LAKKI	278	911	1087	1067	937	814	771	782	5458	125	315	343	241	218	178	131	87	1198	6656
MALAKAND	285	1132	1227	1159	1024	951	796	806	5963	154	561	570	498	419	400	323	294	2504	8467
MANSEHRA	481	2328	2035	1918	1701	1492	1390	1362	9898	400	1554	1591	1350	1168	1065	1055	813	7042	16940
MARDAN	720	3102	3102	2762	2402	2199	2004	1592	14061	516	1591	1323	1373	1108	933	846	704	6287	20348
NOWSHERA	1249	2666	2571	2770	2209	1922	1753	1490	12715	736	1556	1551	1363	1324	1049	907	784	6978	19693
PESHAWAR	3464	10418	9235	8578	7223	6218	5619	5240	42113	2028	5191	4997	4852	4157	3213	2633	2341	22193	64306
SHANGLA	22	340	380	504	458	397	373	299	2411	6	114	85	85	68	66	51	27	382	2793
SWABI	833	2658	2555	2437	2216	2171	1835	1653	12867	446	1344	1276	1143	996	903	774	672	5764	18631
SWAT	80	2735	2836	2823	2613	2095	1880	1751	13998	64	1283	1317	1234	960	831	637	497	5476	19474
TANK	362	1450	1827	1560	1237	1146	928	705	7403	93	312	374	316	222	182	125	80	1299	8702
TOR GHAR		44	81	101	47	45	28	40	342	25	7	20	3	13		1		37	379
Total by Level	13128	48317	47760	45542	39443	35424	32083	28950	229202	7534	24283	23196	21713	18281	15746	13591	11552	104079	333281

Note: Play Group and Nursery Students are excluded

Classwise(Play Group to Class 5) Enrolment by School Level and District

School Level: High

District:	Boys									Girls									G.Total
	P-Grp	Nry	Prep	CI-1	CI-2	CI-3	CI-4	CI-5	Total	P-Grp	Nry	Prep	CI-1	CI-2	CI-3	CI-4	CI-5	Total	
ABBOTTABAD	652	2284	2130	2143	2065	2041	2127	1907	12413	489	1813	1795	1747	1569	1589	1672	1558	9930	22343
BANNU	327	1676	1538	1499	1505	1384	1371	1303	8600	53	272	269	232	211	157	146	131	1146	9746
BATTAGRAM	8	203	184	202	283	244	237	205	1355	4	45	53	48	42	23	35	18	219	1574
BUNNER	123	1357	1382	1319	1223	1269	1195	1227	7615	28	441	534	506	373	382	350	286	2431	10046
CHARSADDA	1702	3638	3348	3349	3307	3199	3166	2930	19299	791	1786	1833	1532	1342	1322	1125	962	8116	27415
CHITRAL	49	250	482	540	523	579	604	619	3347	35	147	257	370	348	308	376	381	2040	5387
D.I.KHAN	561	1582	1794	1585	1524	1562	1350	1332	9147	321	785	724	746	704	636	575	494	3879	13026
DIR BALA	142	651	601	565	569	589	598	594	3516	26	251	215	192	189	176	139	137	1048	4564
DIR PAYAN	217	1280	1787	1779	1581	1763	1691	1823	10424	77	530	605	552	499	433	375	340	2804	13228
HANGU	148	1919	2132	2239	2048	2042	1983	1899	12343	17	583	491	519	412	329	315	223	2289	14632
HARIPUR	354	1546	1455	1434	1512	1489	1353	1511	8754	353	1200	1163	1176	1150	1046	1069	1056	6660	15414
KARAK	205	973	1205	1222	1185	1191	1122	1163	7088	94	508	447	488	439	400	393	310	2477	9565
KOHAT	298	1998	1956	1911	1889	1806	1766	1664	10992	213	838	897	933	904	847	825	780	5186	16178
KOHISTAN	30	28	94	110	88	85	75	76	528	2	2	2		4	3			9	537
LAKKI	198	812	994	1003	951	817	924	933	5622	60	203	229	228	205	187	141	113	1103	6725
MALAKAND	213	1029	1096	1118	1001	1044	1098	1019	6376	113	572	654	623	523	537	512	483	3332	9708
MANSEHRA	414	1407	1345	1251	1219	1329	1286	1239	7669	276	1085	979	868	835	819	892	823	5216	12885
MARDAN	1332	4134	4415	4292	3974	3923	3786	3531	23921	627	1853	1926	1767	1670	1530	1438	1253	9584	33505
NOWSHERA	948	2504	2350	2467	2261	2451	2355	2288	14172	554	1606	1518	1679	1279	1299	1239	1061	8075	22247
PESHAWAR	3503	10760	11031	10937	10429	10036	9988	9793	62214	1756	5271	5980	5391	5334	5043	4479	4242	30469	92683
SHANGLA	35	472	591	656	589	591	514	528	3469	7	105	148	132	129	125	117	83	734	4203
SWABI	612	2584	2768	2785	2662	2619	2697	2585	16116	290	1369	1306	1398	1291	1257	1225	1116	7593	23709
SWAT	346	3963	4223	4356	3905	3721	3530	3114	22849	165	1645	1668	1577	1387	1164	958	767	7521	30370
TANK	63	472	574	561	512	489	466	453	3055	25	119	110	115	87	60	61	47	480	3535
TOR GHAR		66	83	15	10	8	11	9	136		6	7	8	4				19	155
Total by Level	12480	47588	49558	49338	46815	46271	45293	43745	281020	6376	23035	23810	22827	20930	19672	18457	16664	122360	403380

Note: Play Group and Nursery Students are excluded

Classwise(Play Group to Class 5) Enrolment by School Level and District

School Level: Higher Secondary/Inter College

District:	Boys									Girls									G.Total
	P-Grp	Nry	Prep	CI-1	CI-2	CI-3	CI-4	CI-5	Total	P-Grp	Nry	Prep	CI-1	CI-2	CI-3	CI-4	CI-5	Total	
ABBOTTABAD	298	989	1225	1187	1257	1142	1239	1303	7353	198	795	750	797	784	773	810	802	4716	12069
BANNU	105	242	272	292	291	279	270	311	1715	100	93	86	91	92	80	71	84	504	2219
BATTAGRAM	20	245	245	328	310	354	321	369	1927	24	100	72	65	54	89	70	49	399	2326
BUNNER		343	430	432	390	380	396	439	2467		120	140	138	123	96	135	114	746	3213
CHARSADDA	319	678	792	866	1067	933	906	912	5476	166	400	364	421	390	373	378	399	2325	7801
CHITRAL	22	250	391	390	428	424	461	467	2561	13	132	234	216	221	190	222	227	1310	3871
D.I.KHAN	66	474	495	541	529	531	572	804	3472	46	358	336	383	339	306	327	303	1994	5466
DIR BALA	30	86	68	62	50	52	39	47	318	29	97	80	82	57	57	78	59	413	731
DIR PAYAN	155	578	696	605	619	704	685	670	3979	160	372	405	365	370	346	335	334	2155	6134
HANGU	49	317	467	517	504	504	487	487	2966	22	122	162	139	147	92	69	39	648	3614
HARIPUR	328	1187	1187	1125	1171	1138	1039	1205	6865	178	858	893	903	948	882	924	881	5431	12296
KARAK	216	719	953	1164	1041	1018	1065	1252	6493	133	362	466	541	566	509	538	485	3105	9598
KOHAT	336	647	525	750	695	729	779	879	4357	160	369	300	372	408	360	394	344	2178	6535
KOHISTAN	20	73	91	135	182	167	151	148	874	3	2	8	6	7	3	2		26	900
LAKKI	34	178	160	161	151	221	133	135	961	20	140	75	116	89	81	72	90	523	1484
MALAKAND	106	334	395	385	370	426	434	410	2420	60	256	298	249	264	244	240	228	1523	3943
MANSEHRA	283	726	635	666	663	663	712	707	4046	208	542	462	445	513	448	502	463	2833	6879
MARDAN	323	944	1100	1110	1199	1190	1181	1136	6916	159	596	652	638	624	665	634	628	3841	10757
NOWSHERA	218	422	490	485	577	556	538	577	3223	158	518	449	440	420	401	355	313	2378	5601
PESHAWAR	607	1583	1705	1855	1814	1820	1908	2314	11416	249	807	1036	988	909	980	1081	1025	6019	17435
SHANGLA		218	218	251	228	227	191	182	1297	3	29	39	43	81	26	13	16	218	1515
SWABI	264	828	760	881	909	929	967	865	5311	119	494	539	549	507	470	446	460	2971	8282
SWAT	90	1483	1751	1861	1754	1833	1646	1781	10626	59	863	900	876	813	775	800	803	4967	15593
TANK		68	125	99	100	88	81	93	586		20	30	21	18	16	13	15	113	699
Total by Level	3889	13612	15176	16148	16299	16308	16201	17493	97625	2267	8445	8776	8884	8744	8262	8509	8161	51336	148961
G.Total	37121	132130	135229	131531	119953	112433	105505	99333	703984	20722	69428	70486	67809	59520	53809	48586	43135	343345	1047329

Note: Play Group and Nursery Students are excluded

Classwise(Class 6 to 12) Enrolment by School Level and District

School Level: Middle

District:	Boys								Girls								G.Total
	CI-6	CI-7	CI-8	CI-9	CI-10	CI-11	CI-12	Total	CI-6	CI-7	CI-8	CI-9	CI-10	CI-11	CI-12	Total	
ABBOTTABAD	1405	1030	653					3088	1280	992	787					3059	6147
BANNU	1374	1017	729					3120	168	121	104					393	3513
BATTAGRAM	472	351	194					1017	23	24	23					70	1087
BUNNER	632	358	111					1101	113	69	22					204	1305
CHARSADDA	1010	628	319					1957	330	217	90					637	2594
CHITRAL	365	308	193					866	311	267	246					824	1690
D.I.KHAN	1404	1023	542					2969	324	242	141					707	3676
DIR BALA	135	68	60					263	11		3					14	277
DIR PAYAN	737	566	249					1552	145	94	71					310	1862
HANGU	423	393	116					932	26	20						46	978
HARIPUR	783	475	256					1514	591	453	270					1314	2828
KARAK	634	522	290					1446	149	87	30					266	1712
KOHAT	1071	729	333					2133	291	178	97					566	2699
KOHISTAN	87	78	64					229								0	229
LAKKI	741	496	249					1486	49	16	10					75	1561
MALAKAND	669	479	246					1394	145	51	28					224	1618
MANSEHRA	945	686	501					2132	648	465	295					1408	3540
MARDAN	1342	967	503					2812	418	235	145					798	3610
NOWSHERA	955	655	252					1862	458	312	207					977	2839
PESHAWAR	3775	2666	977					7418	1788	811	380					2979	10397
SHANGLA	181	94	61					336	7	8						15	351
SWABI	1198	800	325					2323	317	170	65					552	2875
SWAT	1270	846	312					2428	295	177	42					514	2942
TANK	541	374	193					1108	47	20	19					86	1194
TOR GHAR	51	36	34					121								0	121
Total by Level	22200	15645	7762					45607	7934	5029	3075					45607	91214

Classwise(Class 6 to 12) Enrolment by School Level and District

School Level: High

District:	Boys							Girls							G.Total		
	CI-6	CI-7	CI-8	CI-9	CI-10	CI-11	CI-12	Total	CI-6	CI-7	CI-8	CI-9	CI-10	CI-11		CI-12	Total
ABBOTTABAD	1939	1789	1506	1374	1234			7842	1385	1200	1266	1332	1151			6334	14176
BANNU	1245	1104	989	930	681			4949	166	146	110	80	81			583	5532
BATTAGRAM	233	172	180	190	125			900	29	9	14	5	11			68	968
BUNNER	1254	991	946	843	650			4684	172	120	86	83	52			513	5197
CHARSADDA	2697	2472	2208	1993	1759			11129	892	706	598	618	494			3308	14437
CHITRAL	696	634	589	579	475			2973	472	458	482	708	698			2818	5791
D.I.KHAN	1331	1229	1161	1030	891			5642	440	331	269	355	293			1688	7330
DIR BALA	695	607	560	483	405			2750	120	91	97	90	63			461	3211
DIR PAYAN	1780	1757	1660	1529	1303			8029	313	227	174	169	105			988	9017
HANGU	1881	1852	1432	1176	846			7187	122	105	85	48	48			408	7595
HARIPUR	1346	1179	1125	1017	772			5439	985	881	759	728	557			3910	9349
KARAK	1122	999	924	834	751			4630	267	216	202	231	207			1123	5753
KOHAT	1653	1675	1575	1322	1140			7365	677	637	549	477	397			2737	10102
KOHISTAN	72	79	78	68	75			372	1							1	373
LAKKI	929	789	726	802	671			3917	132	108	83	57	67			447	4364
MALAKAND	821	782	793	664	567			3627	323	236	239	231	212			1241	4868
MANSEHRA	1218	945	1051	965	803			4982	737	686	593	555	451			3022	8004
MARDAN	3267	3122	2834	2510	1748			13481	947	774	649	562	418			3350	16831
NOWSHERA	1994	1752	1726	1621	1444			8537	1146	853	858	961	707			4525	13062
PESHAWAR	9184	8446	8664	7316	5960			39570	3980	3258	3196	3232	2594			16260	55830
SHANGLA	427	402	370	320	256			1775	56	76	47	51	17			247	2022
SWABI	2594	2558	2502	2105	1661			11420	902	679	538	460	393			2972	14392
SWAT	2821	2713	2511	2089	1599			11733	501	309	208	147	96			1261	12994
TANK	519	469	491	398	339			2216	34	36	37	47	42			196	2412
TOR GHAR	10	9		9				28	2							2	30
Total by Level	41728	38526	36601	32167	26155			175177	14801	12142	11139	11227	9154			175177	350354

Classwise(Class 6 to 12) Enrolment by School Level and District

School Level: Higher Secondary/Inter College

District:	Boys								Girls								G.Total
	CI-6	CI-7	CI-8	CI-9	CI-10	CI-11	CI-12	Total	CI-6	CI-7	CI-8	CI-9	CI-10	CI-11	CI-12	Total	
ABBOTTABAD	1357	1254	1235	1555	1479	688	719	8287	820	837	792	990	881	511	581	5412	13699
BANNU	310	349	367	376	331	186	147	2066	76	72	47	55	42	16	11	319	2385
BATTAGRAM	376	356	374	571	446	311	383	2817	33	39	42	27	24	17	14	196	3013
BUNNER	449	414	454	412	417	32	54	2232	219	204	208	204	169	65	56	1125	3357
CHARSADDA	847	908	808	932	848	649	423	5415	398	397	432	407	374	457	396	2861	8276
CHITRAL	560	599	710	859	799	540	607	4674	296	306	390	541	470	871	708	3582	8256
D.I.KHAN	910	892	1068	1168	999	723	571	6331	277	268	267	286	268	251	193	1810	8141
DIR BALA	133	70	114	151	98	140	110	816	74	35	24	44	11	14	12	214	1030
DIR PAYAN	830	747	839	978	855	1214	905	6368	322	280	270	296	202	389	310	2069	8437
HANGU	565	519	552	566	498	345	369	3414	52	43	30	15	21	20	9	190	3604
HARIPUR	1128	998	1022	876	855	572	552	6003	881	786	832	822	667	436	377	4801	10804
KARAK	1381	1194	1420	1525	1400	795	829	8544	639	533	485	594	614	442	523	3830	12374
KOHAT	878	1034	1335	1177	986	1100	953	7463	401	345	356	336	292	480	299	2509	9972
KOHISTAN	157	152	138	300	317	328	276	1668				1	1	1		3	1671
LAKKI	122	148	148	138	112	53	31	752	101	88	81	79	95	114	155	713	1465
MALAKAND	436	410	478	491	415	159	124	2513	221	277	198	215	190	60	163	1324	3837
MANSEHRA	695	689	668	784	701	539	253	4329	457	431	392	429	408	229	277	2623	6952
MARDAN	1139	1222	1439	1453	1214	621	683	7771	612	539	514	483	397	61	118	2724	10495
NOWSHERA	652	656	790	1007	451	275	270	4101	325	296	263	255	253	186	113	1691	5792
PESHAWAR	2786	2216	2580	2612	2219	592	438	13443	1156	1092	1071	925	844	410	447	5945	19388
SHANGLA	128	158	140	121	137	91	92	867	13	6	5	10	13	6	6	59	926
SWABI	930	917	960	887	815	741	563	5813	450	453	453	394	302	199	192	2443	8256
SWAT	1754	1724	2103	2125	1942	613	812	11073	847	774	738	684	515	194	301	4053	15126
TANK	112	128	135	153	88	54	62	732	14	12	6	7	2	2	1	44	776
Total by Level	18635	17754	19877	21217	18422	11361	10226	117492	8684	8113	7896	8099	7055	5431	5262	117492	234984
G.Total	82563	71925	64240	53384	44577	11361	10226	338276	31419	25284	22110	19326	16209	5431	5262	125041	463317

Number of Repeaters by Gender and District

District:	Gender	P-Grp	Nry	Prep	Class-1	Class-2	Class-3	Class-4	Class-5	Class-6	Class-7	Class-8	Class-9	Class-10	Class-11	Class-12
ABBOTTABAD	Boys	20	95	40	34	40	40	50	47	56	40	46	16	13	2	
	Girls	11	59	18	15	20	23	23	22	27	22	28	17	5		
	Total	31	154	58	49	60	63	73	69	83	62	74	33	18	2	0
BANNU	Boys	22	163	66	65	66	59	55	36	18	17	22				
	Girls	12	31	14	11	5	4	1		5	2	6	6			
	Total	34	194	80	76	71	63	56	36	23	19	28	6	0	0	0
BATTAGRAM	Boys	1	22	23	12	12	8	9	8	11	8	16	1	2	3	1
	Girls		9	11	5	5	4	2	2	1	1	2				
	Total	1	31	34	17	17	12	11	10	12	9	18	1	2	3	1
BUNNER	Boys	2	40	39	42	24	56	47	30	34	15	46		1		
	Girls		1	23	22	7	18	11	9	19	5					
	Total	2	41	62	64	31	74	58	39	53	20	46	0	1	0	0
CHARSADDA	Boys	8	12	7	5	6	8	13	7	1		3				
	Girls	3	1	9	3	1	6	4		1	4					
	Total	11	13	16	8	7	14	17	7	2	4	3	0	0	0	0
CHITRAL	Boys	2	17	36	29	32	45	19	33	17	15	16	24	18	10	2
	Girls	1	14	30	17	13	19	11	29	11	14	4	27	10	9	4
	Total	3	31	66	46	45	64	30	62	28	29	20	51	28	19	6
D.I.KHAN	Boys	48	146	59	68	40	30	28	23	14	4	11	2		1	
	Girls	24	59	22	28	8	16	9	10	4		1				
	Total	72	205	81	96	48	46	37	33	18	4	12	2	0	1	0
DIR BALA	Boys	6	11	9	5	11	13	11	7	10	11	11	14	4	1	5
	Girls	3	16	8	13	17	15	21	12	2	3	3				
	Total	9	27	17	18	28	28	32	19	12	14	14	14	4	1	5
DIR PAYAN	Boys	6	20	12	48	42	73	50	62	57	49	47	9	3		
	Girls	1	7	20	62	37	15	37	17							
	Total	7	27	32	110	79	88	87	79	57	49	47	9	3	0	0

Number of Repeaters by Gender and District

District:	Gender	P-Grp	Nry	Prep	Class-1	Class-2	Class-3	Class-4	Class-5	Class-6	Class-7	Class-8	Class-9	Class-10	Class-11	Class-12
HANGU	Boys		10	23	18	12	16	20	21	21	22	29				
	Girls		3	6	1	1	1									
	Total	0	13	29	19	13	17	20	21	21	22	29	0	0	0	0
HARIPUR	Boys	13	149	55	35	49	42	57	45	39	34	39	2	1	1	
	Girls	6	79	30	12	17	27	17	23	23	14	26	1			
	Total	19	228	85	47	66	69	74	68	62	48	65	3	1	1	0
KARAK	Boys		27	19	14	15	16	12	7	11	10	8				
	Girls		6	10	3	3	4	5	2	4	2	1				
	Total	0	33	29	17	18	20	17	9	15	12	9	0	0	0	0
KOHAT	Boys	9	72	47	45	45	29	37	26	26	39	28	4	2	30	32
	Girls	5	46	21	23	25	20	22	13	19	9	10		5		
	Total	14	118	68	68	70	49	59	39	45	48	38	4	7	30	32
KOHISTAN	Boys		5	1	8	4		5	3	6	1	2				
	Girls															
	Total	0	5	1	8	4	0	5	3	6	1	2	0	0	0	0
LAKKI	Boys	2	1	2	3	4	2	2	1	5	2		3			
	Girls	4	3	3												
	Total	6	4	5	3	4	2	2	1	5	2	0	3	0	0	0
MALAKAND	Boys	11	31	13	14	22	19	26	46	22	22	27	12			
	Girls	6	20	5	12	11	11	6	14	2	1	2	1			
	Total	17	51	18	26	33	30	32	60	24	23	29	13	0	0	0
MANSEHRA	Boys	16	85	64	32	34	28	36	24	20	15	26	2			
	Girls	4	22	64	26	15	19	23	13	13	7	11				
	Total	20	107	128	58	49	47	59	37	33	22	37	2	0	0	0
MARDAN	Boys	79	183	116	130	104	108	98	98	57	64	73	22	10		
	Girls	31	76	55	42	72	54	40	39	18	9	5	4			
	Total	110	259	171	172	176	162	138	137	75	73	78	26	10	0	0

No. of Non Govt. Schools, Students, Teaching & Non Teaching Staff by School Type and District

District: ABBOTTABAD

School Type	No. of Schools	Enrolment			Teaching Staff			Non Teaching Staff		
		Boys	Girls	Total	Male	Female	Total	Male	Female	Total
Private	485	50910	38553	89463	1193	4955	6148	747	1013	1760
Semi Government	5	244	213	457	9	50	59	8	9	17
Benevolent Fund	1	314	212	526		23	23		23	23
Elementary Education Fo	2	28	65	93		4	4			0
Fauji Foundation	1	205	164	369		19	19		19	19
Police	16	1227	1245	2472	27	147	174	10	12	22
Public Private Collaboratio	2	364	359	723	4	11	15	1	8	9
Federal Government	2	274	234	508	10	19	29	16	1	17
Army	2	511	479	990	1	51	52	11	2	13
National Education Found	11	176	187	363		16	16	1	1	2
District Total	527	54253	41711	95964	1244	5295	6539	794	1088	1882

District: BANNU

School Type	No. of Schools	Enrolment			Teaching Staff			Non Teaching Staff		
		Boys	Girls	Total	Male	Female	Total	Male	Female	Total
Private	158	31936	5150	37086	1227	512	1739	257	56	313
Semi Government	2	1346	100	1446	30	28	58	16	3	19
University Schools	2	1048	731	1779	16	41	57	13	2	15
Elementary Education Fo	9	70	530	600	0	13	13	0	0	0
Fauji Foundation	1	353	177	530	7	9	16	0	1	1
District/City Govt.	1	28	0	28	3	1	4	5	1	6
Workers Welfare Board	4	507	151	658	77	60	137	102	21	123
Public Private Collaboratio	2	145	26	171	20	6	26	6	2	8
Federal Government	3	520	482	1002	33	17	50	15	1	16
National Education Found	26	156	650	806	1	25	26	0	0	0
Telecom Foundation	1	74	31	105	0	8	8	4	2	6
Missionary	1	87	49	136	1	8	9	1	1	2
Any Other	3	596	43	639	35	0	35	5	0	5
District Total	213	36866	8120	44986	1450	728	2178	424	90	514

No. of Non Govt. Schools, Students, Teaching & Non Teaching Staff by School Type and District

District: BATTAGRAM

School Type	No. of Schools	Enrolment			Teaching Staff			Non Teaching Staff		
		Boys	Girls	Total	Male	Female	Total	Male	Female	Total
Private	57	11714	1765	13479	580	75	655	269	41	310
University Schools	1	338	0	338	12		12	12		12
Elementary Education Fo	4	184	119	303	11		11			0
National Education Found	1	47	21	68	2		2			0
The Citizen's Foundation	1	35	47	82		6	6	2	1	3
Any Other	3	924	179	1103	32		32	14	1	15
District Total	67	13242	2131	15373	637	81	718	297	43	340

District: BUNNER

School Type	No. of Schools	Enrolment			Teaching Staff			Non Teaching Staff		
		Boys	Girls	Total	Male	Female	Total	Male	Female	Total
Private	93	23880	6903	30783	1575	110	1685	359	23	382
Elementary Education Fo	11	133	288	421	3	9	12			0
Bacha Khan Education Sy	1	35	52	87		12	12	6	2	8
District Total	105	24048	7243	31291	1578	131	1709	365	25	390

District: CHARSADDA

School Type	No. of Schools	Enrolment			Teaching Staff			Non Teaching Staff		
		Boys	Girls	Total	Male	Female	Total	Male	Female	Total
Private	266	56275	23064	79339	2123	1983	4106	539	190	729
University Schools	1	16	15	31		9	9	2		2
Elementary Education Fo	22	385	1225	1610		46	46	1	3	4
Police	5	1047	397	1444	35	25	60	4	3	7
Public Private Collaboratio	2	46	58	104	2	9	11	2	1	3
National Education Found	2	35	31	66		2	2			0
Mercy Pak International S	1	240	66	306		14	14	1	1	2
Bacha Khan Education Sy	1	120	111	231		19	19	2	2	4
Any Other	5	765	424	1189	26	42	68	10	3	13
District Total	305	58929	25391	84320	2186	2149	4335	561	203	764

No. of Non Govt. Schools, Students, Teaching & Non Teaching Staff by School Type and District

District: **CHITRAL**

School Type	No. of Schools	Enrolment			Teaching Staff			Non Teaching Staff		
		Boys	Girls	Total	Male	Female	Total	Male	Female	Total
Private	137	12278	6437	18715	792	602	1394	210	61	271
Semi Government	5	98	113	211	2	6	8	1	0	1
University Schools	1	121	61	182	8	6	14	3	1	4
Benevolent Fund	1	95	30	125	6	7	13	2	0	2
Elementary Education Fo	5	120	220	340	8	7	15	4	0	4
Frontier Education Found	2	30	64	94	0	3	3	0	0	0
Fauji Foundation	1	525	64	589	23	17	40	0	0	0
Police	5	314	140	454	22	18	40	2	0	2
Public Private Collaboratio	1	20	13	33	4	0	4	0	0	0
Army	2	399	97	496	18	9	27	7	2	9
Pak Bait-ul-Mal	2	97	69	166	6	7	13	2	0	2
National Education Found	92	1975	2505	4480	106	171	277	17	19	36
Agha Khan Education Sys	53	2774	4715	7489	176	174	350	26	11	37
Bacha Khan Education Sy	1	113	76	189	5	8	13	1	1	2
Any Other	9	368	496	864	20	40	60	7	4	11
District Total	317	19327	15100	34427	1196	1075	2271	282	99	381

No. of Non Govt. Schools, Students, Teaching & Non Teaching Staff by School Type and District

District: D.I.KHAN

School Type	No. of Schools	Enrolment			Teaching Staff			Non Teaching Staff		
		Boys	Girls	Total	Male	Female	Total	Male	Female	Total
Private	363	44615	15780	60395	1846	2060	3906	605	270	875
Semi Government	2	674	381	1055	16	56	72	8	6	14
University Schools	3	1712	407	2119	43	58	101	61	7	68
Elementary Education Fo	8	62	285	347		13	13			0
Frontier Education Found	1	0	53	53		14	14	7	7	14
OPF	2	90	170	260	6	19	25	10	2	12
District/City Govt.	1	29	27	56	1	8	9	1	1	2
Police	2	264	217	481	7	24	31	5	2	7
Workers Welfare Board	3	772	80	852	110	42	152	90	11	101
Federal Government	1	209	207	416	12	9	21	6		6
Army	1	470	269	739	5	46	51	16	6	22
National Education Found	77	691	2317	3008	3	86	89	2	1	3
Telecom Foundation	1	193	105	298	3	21	24	7	3	10
Missionary	2	854	563	1417	23	36	59	15	1	16
Any Other	3	99	76	175	3	10	13	2	2	4
District Total	470	50734	20937	71671	2078	2502	4580	835	319	1154

District: DIR BALA

School Type	No. of Schools	Enrolment			Teaching Staff			Non Teaching Staff		
		Boys	Girls	Total	Male	Female	Total	Male	Female	Total
Private	39	8491	1917	10408	418	63	481	87	9	96
University Schools	5	903	500	1403	37	21	58	14	1	15
Elementary Education Fo	5	43	106	149	0	5	5	0	0	0
Public Private Collaboratio	1	73	1	74	6	0	6	2	0	2
UNICEF	1	0	104	104	0	1	1	0	0	0
Bacha Khan Education Sy	1	175	63	238	14	0	14	2	1	3
Any Other	1	108	76	184	9	4	13	3	1	4
District Total	53	9793	2767	12560	484	94	578	108	12	120

No. of Non Govt. Schools, Students, Teaching & Non Teaching Staff by School Type and District

District: DIR PAYAN

School Type	No. of Schools	Enrolment			Teaching Staff			Non Teaching Staff		
		Boys	Girls	Total	Male	Female	Total	Male	Female	Total
Private	164	36168	8981	45149	1842	401	2243	465	54	519
Semi Government	1	62	54	116	1		1	0	0	0
University Schools	1	746	473	1219	10	27	37	5	6	11
Elementary Education Fo	23	0	975	975		34	34	0	0	0
Frontier Education Found	1	0	226	226		20	20	8	5	13
Fauji Foundation	1	137	31	168	12		12	2	0	2
Police	1	496	36	532	24		24	4	0	4
Public Private Collaboratio	2	661	37	698	23		23	2	0	2
Army	1	479	249	728	14	21	35	7	2	9
National Education Found	79	482	2514	2996	1	80	81	1	2	3
Missionary	1	0	311	311		8	8	2	0	2
Bacha Khan Education Sy	1	148	11	159	16		16	10	0	10
Any Other	30	1536	1969	3505	53	78	131	14	1	15
District Total	306	40915	15867	56782	1996	669	2665	520	70	590

District: HANGU

School Type	No. of Schools	Enrolment			Teaching Staff			Non Teaching Staff		
		Boys	Girls	Total	Male	Female	Total	Male	Female	Total
Private	103	30019	3958	33977	1141	289	1430	225	15	240
Semi Government	1	492	83	575	17	9	26	7		7
OPF	1	122	239	361		16	16	6	1	7
Bacha Khan Education Sy	1	308	44	352	8	3	11	2		2
District Total	106	30941	4324	35265	1166	317	1483	240	16	256

No. of Non Govt. Schools, Students, Teaching & Non Teaching Staff by School Type and District

District: HARIPUR

School Type	No. of Schools	Enrolment			Teaching Staff			Non Teaching Staff		
		Boys	Girls	Total	Male	Female	Total	Male	Female	Total
Private	336	35046	26598	61644	584	4027	4611	495	438	933
University Schools	1	74	0	74		16	16	6	2	8
Fauji Foundation	1	31	20	51	2	2	4		1	1
Police	8	617	441	1058	8	85	93	4	12	16
Workers Welfare Board	3	1862	1475	3337	102	150	252	161	23	184
Public Private Collaboratio	4	436	336	772	4	56	60	4	6	10
WAPDA	3	1062	1034	2096	33	66	99	20	8	28
National Education Found	16	323	423	746		16	16		2	2
Telecom Foundation	3	578	1235	1813	36	67	103	43	13	56
Any Other	7	1123	207	1330	26	44	70	9	7	16
District Total	382	41152	31769	72921	795	4529	5324	742	512	1254

District: KARAK

School Type	No. of Schools	Enrolment			Teaching Staff			Non Teaching Staff		
		Boys	Girls	Total	Male	Female	Total	Male	Female	Total
Private	159	31746	11721	43467	1689	462	2151	333	43	376
Elementary Education Fo	3	25	37	62		3	3			0
Fauji Foundation	1	327	104	431	12	8	20	9	4	13
Workers Welfare Board	2	845	386	1231	103	51	154	17	9	26
National Education Found	3	30	101	131		3	3			0
Bacha Khan Education Sy	2	288	161	449	4	25	29	5	3	8
Any Other	5	1068	362	1430	66	9	75	8	1	9
District Total	175	34329	12872	47201	1874	561	2435	372	60	432

No. of Non Govt. Schools, Students, Teaching & Non Teaching Staff by School Type and District

District: KOHAT

School Type	No. of Schools	Enrolment			Teaching Staff			Non Teaching Staff		
		Boys	Girls	Total	Male	Female	Total	Male	Female	Total
Private	244	37683	16644	54327	1068	1804	2872	430	207	637
Semi Government	2	896	218	1114	36	23	59	29	2	31
University Schools	1	93	39	132	2	8	10	1		1
Elementary Education Fo	7	101	233	334	2	9	11			0
Fauji Foundation	2	262	122	384	19	21	40	9	4	13
Police	4	446	347	793	14	28	42	5	3	8
Workers Welfare Board	3	691	358	1049	52	66	118	50	10	60
Public Private Collaboratio	3	129	52	181	16	7	23	7	1	8
Federal Government	5	1073	1042	2115	33	58	91	35	7	42
Army	2	1485	551	2036	44	83	127	47	13	60
P.A.F	1	1301	528	1829	21	81	102	40	1	41
National Education Found	51	1454	1939	3393	3	61	64	1	8	9
Telecom Foundation	1	33	27	60		7	7	1	1	2
Missionary	1	953	475	1428	10	48	58	13	3	16
Bacha Khan Education Sy	1	90	32	122	1	10	11	1	2	3
Any Other	5	1279	441	1720	65	22	87	11	4	15
District Total	333	47969	23048	71017	1386	2336	3722	680	266	946

District: KOHISTAN

School Type	No. of Schools	Enrolment			Teaching Staff			Non Teaching Staff		
		Boys	Girls	Total	Male	Female	Total	Male	Female	Total
Private	15	4427	46	4473	187		187	34		34
District Total	15	4427	46	4473	187		187	34		34

No. of Non Govt. Schools, Students, Teaching & Non Teaching Staff by School Type and District

District: LAKKI

School Type	No. of Schools	Enrolment			Teaching Staff			Non Teaching Staff		
		Boys	Girls	Total	Male	Female	Total	Male	Female	Total
Private	95	17433	3768	21201	913	132	1045	206	26	232
Elementary Education Fo	2	45	87	132		3	3			0
Frontier Education Found	1	0	174	174		16	16	8	6	14
Police	4	825	112	937	43	2	45	14		14
Workers Welfare Board	1	81	40	121	96	19	115	73	1	74
Public Private Collaboratio	1	44	0	44	7		7	1		1
Bacha Khan Education Sy	1	141	118	259		8	8	4	1	5
Any Other	2	491	105	596	19	20	39	3	4	7
District Total	107	19060	4404	23464	1078	200	1278	309	38	347

District: MALAKAND

School Type	No. of Schools	Enrolment			Teaching Staff			Non Teaching Staff		
		Boys	Girls	Total	Male	Female	Total	Male	Female	Total
Private	104	22157	10143	32300	878	773	1651	257	57	314
Elementary Education Fo	8	98	271	369	0	13	13	0	0	0
Public Private Collaboratio	2	310	117	427	19		19	1	0	1
Federal Government	1	396	96	492	19	3	22	9		9
Army	1	285	179	464	11	26	37	4	2	6
National Education Found	97	1330	2064	3394	6	101	107	0	0	0
Bacha Khan Education Sy	2	93	79	172	1	24	25	4	2	6
Any Other	1	33	18	51	1	8	9	2	1	3
District Total	216	24702	12967	37669	935	948	1883	277	62	339

District: MANSEHRA

School Type	No. of Schools	Enrolment			Teaching Staff			Non Teaching Staff		
		Boys	Girls	Total	Male	Female	Total	Male	Female	Total
Private	305	33912	22455	56367	1070	2703	3773	441	448	889
University Schools	1	162	72	234		24	24	4	4	8
Elementary Education Fo	21	516	809	1325	2	32	34	1	4	5
Army	1	309	197	506	7	35	42	12	5	17
Pak Bait-ul-Mal	1	90	30	120		5	5	2	1	3
National Education Found	1	17	18	35		1	1			0
The Citizen's Foundation	8	760	778	1538		95	95	22	21	43
Any Other	7	508	285	793	31	46	77	15	3	18
District Total	345	36274	24644	60918	1110	2941	4051	497	486	983

No. of Non Govt. Schools, Students, Teaching & Non Teaching Staff by School Type and District

District: MARDAN

School Type	No. of Schools	Enrolment			Teaching Staff			Non Teaching Staff		
		Boys	Girls	Total	Male	Female	Total	Male	Female	Total
Private	395	73667	29393	103060	3106	2704	5810	983	313	1296
Semi Government	4	355	244	599	20	22	42	8	3	11
University Schools	1	224	63	287	4	8	12	2		2
Elementary Education Fo	11	339	356	695	5	19	24	2	2	4
OPF	1	709	70	779	44	24	68	17	6	23
Workers Welfare Board	2	817	551	1368	72	74	146	70	10	80
Public Private Collaboratio	4	579	178	757	19	41	60	5	2	7
Federal Government	5	1073	557	1630	46	45	91	38	4	42
National Education Found	21	120	331	451		21	21			0
Missionary	1	8	42	50		2	2	1		1
The Citizen's Foundation	1	239	144	383		15	15	3	3	6
Bacha Khan Education Sy	1	72	59	131	2	6	8	3	1	4
Any Other	11	873	456	1329	40	34	74	16	1	17
District Total	458	79075	32444	111519	3358	3015	6373	1148	345	1493

District: NOWSHERA

School Type	No. of Schools	Enrolment			Teaching Staff			Non Teaching Staff		
		Boys	Girls	Total	Male	Female	Total	Male	Female	Total
Private	279	42279	23724	66003	1335	2548	3883	582	403	985
Semi Government	1	50	0	50	4		4			0
Elementary Education Fo	8	230	324	554	11	10	21			0
Police	1	231	81	312	9		9	3		3
Federal Government	10	1425	1325	2750	77	60	137	59	5	64
Army	2	606	294	900	15	48	63	8	4	12
Cantonment Board	1	189	137	326	1	12	13	4	4	8
National Education Found	4	159	163	322		6	6			0
Missionary	4	811	260	1071	13	59	72	16	3	19
The Citizen's Foundation	1	342	242	584		22	22	4	3	7
Any Other	12	3020	1314	4334	121	118	239	97	6	103
District Total	323	49342	27864	77206	1586	2883	4469	773	428	1201

No. of Non Govt. Schools, Students, Teaching & Non Teaching Staff by School Type and District

District: PESHAWAR

School Type	No. of Schools	Enrolment			Teaching Staff			Non Teaching Staff		
		Boys	Girls	Total	Male	Female	Total	Male	Female	Total
Private	932	174644	81457	256101	5145	9113	14258	2171	1290	3461
Semi Government	3	640	175	815	13	31	44	22	3	25
University Schools	13	4882	2577	7459	257	215	472	144	35	179
Elementary Education Fo	11	275	827	1102	1	31	32	1	1	2
Frontier Education Found	1	0	159	159	15	22	37	10	6	16
District/City Govt.	2	1280	2344	3624	53	56	109	36	9	45
Police	5	1073	794	1867	38	52	90	13	6	19
Workers Welfare Board	1	651	441	1092	46	62	108	43	10	53
Public Private Collaboratio	11	2062	817	2879	64	84	148	17	12	29
Federal Government	12	1883	2217	4100	69	109	178	79	17	96
Army	5	1980	1458	3438	40	242	282	50	28	78
WAPDA	1	426	118	544	8	9	17	3	1	4
National Education Found	7	467	401	868		14	14	1	6	7
Telecom Foundation	3	164	184	348	3	3	6			0
Missionary	6	2730	513	3243	57	100	157	47	3	50
Mercy Pak International S	12	1784	664	2448	28	64	92	13	10	23
Bacha Khan Education Sy	2	6	75	81	6	18	24	8	2	10
Any Other	19	2493	1608	4101	91	145	236	19	14	33
District Total	1046	197440	96829	294269	5934	10370	16304	2677	1453	4130

District: SHANGLA

School Type	No. of Schools	Enrolment			Teaching Staff			Non Teaching Staff		
		Boys	Girls	Total	Male	Female	Total	Male	Female	Total
Private	57	10925	2011	12936	634	5	639	113	2	115
Police	3	632	9	641	25		25	5		5
Public Private Collaboratio	2	394	11	405	19		19	2		2
Army	1	170	30	200	10		10	1		1
Pak Bait-ul-Mal	1	34	86	120		5	5		1	1
District Total	64	12155	2147	14302	688	10	698	121	3	124

No. of Non Govt. Schools, Students, Teaching & Non Teaching Staff by School Type and District

District: SWABI

School Type	No. of Schools	Enrolment			Teaching Staff			Non Teaching Staff		
		Boys	Girls	Total	Male	Female	Total	Male	Female	Total
Private	304	56193	23360	79553	2870	1904	4774	813	185	998
Semi Government	1	47	6	53	7		7	1		1
University Schools	1	28	17	45	1	17	18	4	2	6
Elementary Education Fo	10	135	334	469		20	20			0
Fauji Foundation	1	277	117	394	8	13	21	8	4	12
Police	3	318	173	491	6	28	34	6	3	9
WAPDA	2	550	577	1127	16	30	46	13	4	17
Pak Bait-ul-Mal	1	120	0	120	5		5	2	1	3
National Education Found	38	417	1045	1462	1	37	38			0
The Citizen's Foundation	2	239	184	423		17	17	5	5	10
Bacha Khan Education Sy	1	99	60	159	5	5	10	3		3
Any Other	10	1884	677	2561	75	66	141	31	13	44
District Total	374	60307	26550	86857	2994	2137	5131	886	217	1103

District: SWAT

School Type	No. of Schools	Enrolment			Teaching Staff			Non Teaching Staff		
		Boys	Girls	Total	Male	Female	Total	Male	Female	Total
Private	310	74484	24407	98891	3792	1223	5015	821	116	937
Semi Government	3	907	138	1045	40	27	67	48	3	51
Elementary Education Fo	7	220	471	691		9	9	1		1
Police	1	624	257	881	40	7	47	10	3	13
Workers Welfare Board	1	465	435	900	36	42	78	50	50	100
Public Private Collaboratio	2	91	0	91	17		17	3		3
National Education Found	19	1119	329	1448	31	1	32	6	0	6
Missionary	1	0	211	211		14	14		4	4
The Citizen's Foundation	1	826	355	1181	24	27	51	46	18	64
Any Other	5	982	165	1147	60		60	5		5
District Total	350	79718	26768	106486	4040	1350	5390	990	194	1184

No. of Non Govt. Schools, Students, Teaching & Non Teaching Staff by School Type and District

District: TANK

School Type	No. of Schools	Enrolment			Teaching Staff			Non Teaching Staff		
		Boys	Girls	Total	Male	Female	Total	Male	Female	Total
Private	79	15988	2072	18060	772	121	893	162	19	181
Semi Government	1	263	260	523	15	16	31	11	2	13
Workers Welfare Board	1	88	3	91	55	6	61	34	2	36
Any Other	1	208	17	225	13		13	3		3
District Total	82	16547	2352	18899	855	143	998	210	23	233

District: TOR GHAR

School Type	No. of Schools	Enrolment			Teaching Staff			Non Teaching Staff		
		Boys	Girls	Total	Male	Female	Total	Male	Female	Total
Private	3	627	58	685	22	2	24	2		2
Elementary Education Fo	1	88	33	121	2		2			0
District Total	4	715	91	806	24	2	26	2		2
Grand Total	6743	1042260	468386	1510646	40859	44466	85325	14144	6052	20196

No. of Teachers by Academic Qualification

District: ABBOTTABAD

School Type	Matric Arts	Matric Science	FA	FSc	BA	BSc	MA	MSc	M Phil	Phd	Others	TOTAL
Private	100	244	1073	311	1674	617	1233	731	44	5	116	6148
Semi Government			3	1	7	4	22	19			3	59
Benevolent Fund					6		15	2				23
Elementary Education Fo		2			2							4
Fauji Foundation							7	12				19
Police	11		67	4	65	7	18	1			1	174
Public Private Collaborati		3	1	1	2	4	3	1				15
Federal Government		1	4	2	5	5	7	4	1			29
Army			2		36		13	1				52
National Education Foun	1	5	5		3		2					16
District Total	112	255	1155	319	1800	637	1320	771	45	5	120	6539

District: BANNU

School Type	Matric Arts	Matric Science	FA	FSc	BA	BSc	MA	MSc	M Phil	Phd	Others	TOTAL
Private	64	25	249	89	430	139	515	221	4		3	1739
Semi Government							26	30	2			58
University Schools			4	4	16	9	18	6				57
Elementary Education Fo	5		1		4	1	2					13
Fauji Foundation								16				16
District/City Govt.						3	1					4
Workers Welfare Board			2	2	64	31	21	15	2			137
Public Private Collaborati							10	16				26
Federal Government	2		2		8	6	27	5				50
Army												0
National Education Foun	3		4		15	1	3					26
Telecom Foundation					2	1	3	2				8
Missionary			2		5	1	1					9
Any Other	2		5	3	8	6	8	3				35
District Total	76	25	269	98	552	198	635	314	8		3	2178

No. of Teachers by Academic Qualification

District: BATTAGRAM

School Type	Matric Arts	Matric Science	FA	FSc	BA	BSc	MA	MSc	M Phil	Phd	Others	TOTAL
Private	47	36	91	94	132	78	87	52	12	3	23	655
University Schools		2		3		4		3				12
Elementary Education Fo	3	1	3		3		1					11
National Education Foun					1						1	2
Telecom Foundation												0
The Citizen's Foundation	1	1	1	1	1			1				6
Any Other	1	2	1	4	7	2	3	1			11	32
District Total	52	42	96	102	144	84	91	57	12	3	35	718

District: BUNNER

School Type	Matric Arts	Matric Science	FA	FSc	BA	BSc	MA	MSc	M Phil	Phd	Others	TOTAL
Private	69	51	256	209	403	174	276	191	7		49	1685
Elementary Education Fo	2		10									12
Bacha Khan Education S			1		2	1	4	4				12
District Total	71	51	267	209	405	175	280	195	7		49	1709

District: CHARSADDA

School Type	Matric Arts	Matric Science	FA	FSc	BA	BSc	MA	MSc	M Phil	Phd	Others	TOTAL
Private	221	169	635	411	906	482	827	431	21		3	4106
University Schools					3			6				9
Elementary Education Fo	7	2	24	1	7		5					46
Police	1	3	13	8	12	10	7	6				60
Public Private Collaborati			2		6		3					11
National Education Foun			1		1							2
Mercy Pak International	2		9		2	1						14
Bacha Khan Education S					4		9	6				19
Any Other	3	1	19	6	23	4	10	2				68
District Total	234	175	703	426	964	497	861	451	21		3	4335

No. of Teachers by Academic Qualification

District: CHITRAL

School Type	Matric Arts	Matric Science	FA	FSc	BA	BSc	MA	MSc	M Phil	Phd	Others	TOTAL
Private	39	15	98	53	357	252	329	246	2		3	1394
Semi Government			1		6	1						8
University Schools			2	1	3	6	2					14
Benevolent Fund	1				7	2	2	1				13
Elementary Education Fo			3		3	6	3					15
Frontier Education Found			2		1							3
Fauji Foundation					13		23	4				40
Police	2		2		16	6	7	7				40
Public Private Collaborati					3						1	4
Army	1				5	1	2	18				27
Pak Bait-ul-Mal		1		1	3	3	2	2		1		13
National Education Foun	17	2	46	14	114	41	33	9			1	277
Agha Khan Education Sy	2		17		142	54	95	38	2			350
Bacha Khan Education S					4	4	5					13
Any Other	3	1	11	1	21	11	9	3				60
District Total	65	19	182	70	698	387	512	328	4	1	5	2271

No. of Teachers by Academic Qualification

District: D.I.KHAN

School Type	Matric Arts	Matric Science	FA	FSc	BA	BSc	MA	MSc	M Phil	Phd	Others	TOTAL
Private	138	114	557	301	946	367	880	505	21	5	72	3906
Semi Government			3		6	2	18	40	1		2	72
University Schools				1	10	10	29	44	4	3		101
Elementary Education Fo	5		4		2		2					13
Frontier Education Found							14					14
OPF			2		1	5	4	13				25
District/City Govt.			2		2		3	1			1	9
Police	1		4	1	16	3	4	2				31
Workers Welfare Board				1	39	10	65	32	1		4	152
Federal Government	3		2		3	1	8	4				21
Army							26	19			6	51
National Education Foun	8	1	38	1	24	4	10	3				89
Telecom Foundation					10		6	1	1		6	24
Missionary		1	4		23	3	14	14				59
Any Other		1	5		1	1	4	1				13
District Total	155	117	621	305	1083	406	1087	679	28	8	91	4580

District: DIR BALA

School Type	Matric Arts	Matric Science	FA	FSc	BA	BSc	MA	MSc	M Phil	Phd	Others	TOTAL
Private	26	15	54	46	120	68	90	50	5		7	481
University Schools				1	13	2	34	8				58
Elementary Education Fo	2		1		2							5
Public Private Collaborati							2	4				6
UNICEF	1											1
Bacha Khan Education S				1	4	2	6	1				14
Any Other	2			1	2						8	13
District Total	31	15	55	49	141	72	132	63	5		15	578

No. of Teachers by Academic Qualification

District: DIR PAYAN

School Type	Matric Arts	Matric Science	FA	FSc	BA	BSc	MA	MSc	M Phil	Phd	Others	TOTAL
Private	42	20	168	174	463	283	584	444	37	2	26	2243
Semi Government			1									1
University Schools					3	4	9	21				37
Elementary Education Fo	6		19		8		1					34
Frontier Education Found							7	13				20
Fauji Foundation			2	2	2	2	1	2			1	12
Police		1	3	2	1	1	14	2				24
Public Private Collaborati	1		1	2	5	5	5	4				23
Army			2	1	9	1	11	11				35
National Education Foun	16	2	37	2	17		7					81
Missionary	2		2	2	2							8
Bacha Khan Education S							11	5				16
Any Other	11	1	49	6	26	7	17	13	1			131
District Total	78	24	284	191	536	303	667	515	38	2	27	2665

District: HANGU

School Type	Matric Arts	Matric Science	FA	FSc	BA	BSc	MA	MSc	M Phil	Phd	Others	TOTAL
Private	30	70	257	237	305	164	195	159	4		9	1430
Semi Government	1		3		5	4	5	8				26
OPF					3	3	6	4				16
Army												0
Bacha Khan Education S			4	1	2	1	3					11
District Total	31	70	264	238	315	172	209	171	4		9	1483

No. of Teachers by Academic Qualification

District: HARIPUR

School Type	Matric Arts	Matric Science	FA	FSc	BA	BSc	MA	MSc	M Phil	Phd	Others	TOTAL
Private	159	133	723	258	1359	473	849	557	8		92	4611
University Schools					1	1	6	8				16
Fauji Foundation	2				1			1				4
Police	4	4	23	7	26	13	10	6				93
Workers Welfare Board		1	3		41	23	109	70	1		4	252
Public Private Collaborati	4	3	20	3	13	6	9	2				60
WAPDA	9			2	28	5	35	17			3	99
National Education Foun		4	6		6							16
Telecom Foundation		5	7	7	24	10	27	23				103
Any Other	2	5	8	1	20	6	22	5			1	70
District Total	180	155	790	278	1519	537	1067	689	9		100	5324

District: KARAK

School Type	Matric Arts	Matric Science	FA	FSc	BA	BSc	MA	MSc	M Phil	Phd	Others	TOTAL
Private	44	72	201	223	434	265	445	447	11	1	8	2151
Elementary Education Fo			2		1							3
Fauji Foundation					2	1	9	8				20
Workers Welfare Board				2	41	9	65	37				154
National Education Foun					2		1					3
Bacha Khan Education S					5	3	16	5				29
Any Other	2	2	13	5	13	12	16	12				75
District Total	46	74	216	230	498	290	552	509	11	1	8	2435

No. of Teachers by Academic Qualification

District: KOHAT

School Type	Matric Arts	Matric Science	FA	FSc	BA	BSc	MA	MSc	M Phil	Phd	Others	TOTAL
Private	105	107	504	252	706	379	426	353	18	1	21	2872
Semi Government					1		31	27				59
University Schools	3		5	1			1					10
Elementary Education Fo	3		3		5							11
Fauji Foundation							24	15	1			40
Police	2	1	13	5	5	5	8	3				42
Workers Welfare Board	3		3	7	43	13	27	21			1	118
Public Private Collaborati			3	3	4	4	9					23
Federal Government					16	5	41	29				91
Army					28	1	37	56	5			127
P.A.F			5	1	12	10	36	37	1			102
National Education Foun	4	4	32	2	16		5				1	64
Telecom Foundation					1	1	4	1				7
Missionary	4		11		19	12	8	4				58
Bacha Khan Education S							4	6	1			11
Any Other	7	5	7	23	20	14	7	1			3	87
District Total	131	117	586	294	876	444	668	553	26	1	26	3722

District: KOHISTAN

School Type	Matric Arts	Matric Science	FA	FSc	BA	BSc	MA	MSc	M Phil	Phd	Others	TOTAL
Private	10	15	23	27	30	24	20	26			12	187
District Total	10	15	23	27	30	24	20	26			12	187

No. of Teachers by Academic Qualification

District: LAKKI

School Type	Matric Arts	Matric Science	FA	FSc	BA	BSc	MA	MSc	M Phil	Phd	Others	TOTAL
Private	16	20	85	63	232	129	311	183	2		4	1045
Elementary Education Fo	1				1		1					3
Frontier Education Found							11	5				16
Police		1	1	2	19	1	13	8				45
Workers Welfare Board			3		30	5	43	33	1			115
Public Private Collaborati						1	3	3				7
Bacha Khan Education S					1	1	3	3				8
Any Other			3	4	14	5	7	6				39
District Total	17	21	92	69	297	142	392	241	3		4	1278

District: MALAKAND

School Type	Matric Arts	Matric Science	FA	FSc	BA	BSc	MA	MSc	M Phil	Phd	Others	TOTAL
Private	69	24	203	136	472	176	376	165	12	1	17	1651
Elementary Education Fo	2		3		6		1	1				13
Public Private Collaborati		4	3	6	3		3					19
Federal Government			3		2		10	6	1			22
Army					6	3	20	8				37
National Education Foun	20	1	33	2	31	2	18					107
Bacha Khan Education S						1	22	2				25
Any Other							5	3			1	9
District Total	91	29	245	144	520	182	455	185	13	1	18	1883

District: MANSEHRA

School Type	Matric Arts	Matric Science	FA	FSc	BA	BSc	MA	MSc	M Phil	Phd	Others	TOTAL
Private	112	232	720	300	900	338	588	379	19	5	180	3773
University Schools								3	2		19	24
Elementary Education Fo		4	24		6							34
Army							16	23	3			42
Pak Bait-ul-Mal							4	1				5
National Education Foun			1									1
The Citizen's Foundation	7	5	24	5	25	5	21	3				95
Any Other	5	7	17	4	20	8	11	4			1	77
District Total	124	248	786	309	951	351	640	413	24	5	200	4051

No. of Teachers by Academic Qualification

District: MARDAN

School Type	Matric Arts	Matric Science	FA	FSc	BA	BSc	MA	MSc	M Phil	Phd	Others	TOTAL
Private	168	161	842	433	1537	561	1397	599	29	3	80	5810
Semi Government	1	5	5	11	6		9	1			4	42
University Schools						7	3	2				12
Elementary Education Fo	2		8		9	1	3				1	24
OPF	3	3	27	20	8	2	5					68
Workers Welfare Board					42	31	46	24	1		2	146
Public Private Collaborati	12	11	6	7	18		5	1				60
Federal Government	1		9	2	11	17	36	13			2	91
National Education Foun	2		11		5	1	2					21
Missionary	1		1									2
The Citizen's Foundation					2		13					15
Bacha Khan Education S					1	1	3	3				8
Any Other	1		14	6	23	4	17	4			5	74
District Total	191	180	923	479	1662	625	1539	647	30	3	94	6373

District: NOWSHERA

School Type	Matric Arts	Matric Science	FA	FSc	BA	BSc	MA	MSc	M Phil	Phd	Others	TOTAL
Private	281	156	760	316	947	435	617	302	10	1	58	3883
Semi Government					1	1	2					4
Elementary Education Fo	3	1	4	2	6		5					21
Police			2		3		4					9
Workers Welfare Board												0
Federal Government			6	1	35	25	51	19				137
Army					11	10	27	15				63
Cantonment Board	1		2		3		7					13
National Education Foun	3		2				1					6
Missionary	2	1	9	1	29	17	2	6	3	2		72
The Citizen's Foundation			1	1	12	3	5					22
Any Other	17	4	40	14	58	25	62	18	1			239
District Total	307	162	826	335	1105	516	783	360	14	3	58	4469

No. of Teachers by Academic Qualification

District: PESHAWAR

School Type	Matric Arts	Matric Science	FA	FSc	BA	BSc	MA	MSc	M Phil	Phd	Others	TOTAL
Private	1134	609	2253	1181	3240	1786	2221	1625	109	10	90	14258
Semi Government	3	1	8		4	2	21	5				44
University Schools	12	103	51	3	57	32	107	104		3		472
Elementary Education Fo	4	2	10	2	10	3					1	32
Frontier Education Found	14			2	2		10	9				37
Fauji Foundation												0
District/City Govt.			4	2	17	37	36	13				109
Police	1		29	7	21	11	14	7				90
Workers Welfare Board					26	15	40	26	1			108
Public Private Collaborati	8	7	28	10	45	13	23	13	1			148
Federal Government	4	1	18	2	48	17	59	28	1			178
Army	10	2		7	45	8	114	96				282
P.A.F												0
WAPDA	5	4		4	2		2					17
National Education Foun	3	1	5		4		1					14
Telecom Foundation	1	1	2	1	1							6
Missionary	10		26	12	55	25	17	9	3			157
Mercy Pak International	7	15	25	7	14	2	14	7	1			92
Bacha Khan Education S	4	10					6	4				24
Any Other	52	21	63	18	40	8	13	4			17	236
District Total	1272	777	2522	1258	3631	1959	2698	1950	116	13	108	16304

District: SHANGLA

School Type	Matric Arts	Matric Science	FA	FSc	BA	BSc	MA	MSc	M Phil	Phd	Others	TOTAL
Private	20	24	56	122	136	84	122	61	7		7	639
Police	2	4	4	5	2	1	3	4				25
Public Private Collaborati	1			5	4	3	6					19
Army	1		2	2	3	1	1					10
Pak Bait-ul-Mal			1		4							5
District Total	24	28	63	134	149	89	132	65	7		7	698

No. of Teachers by Academic Qualification

District: SWABI

School Type	Matric Arts	Matric Science	FA	FSc	BA	BSc	MA	MSc	M Phil	Phd	Others	TOTAL
Private	148	132	643	404	1254	560	1005	513	16		99	4774
Semi Government			2	5								7
University Schools					4	3	6	5				18
Elementary Education Fo	5		7	1	7							20
Fauji Foundation					1		7	13				21
Police	1		7		6	7	8	5				34
Workers Welfare Board												0
WAPDA	2				15	3	13	13				46
Pak Bait-ul-Mal	1						4					5
National Education Foun	8		14	1	10		5					38
The Citizen's Foundation					2	1	13	1				17
Bacha Khan Education S					2		7	1				10
Any Other	2	5	23	18	39	12	27	13	1	1		141
District Total	167	137	696	429	1340	586	1095	564	17	1	99	5131

District: SWAT

School Type	Matric Arts	Matric Science	FA	FSc	BA	BSc	MA	MSc	M Phil	Phd	Others	TOTAL
Private	168	189	677	649	1099	628	908	568	48	9	72	5015
Semi Government							30	34	1	2		67
Elementary Education Fo	2		6		1							9
Police			5	4	15	2	13	7	1			47
Workers Welfare Board					14	8	33	20	3			78
Public Private Collaborati							9	7	1			17
National Education Foun	4	1	10	5	5	3	3				1	32
Missionary					6	8						14
The Citizen's Foundation					29	4	5	4			9	51
Any Other	2	12	7	7	11	7	9	3			2	60
District Total	176	202	705	665	1180	660	1010	643	54	11	84	5390

No. of Teachers by Academic Qualification

District: TANK

School Type	Matric Arts	Matric Science	FA	FSc	BA	BSc	MA	MSc	M Phil	Phd	Others	TOTAL
Private	34	30	115	92	186	109	228	88	1		10	893
Semi Government	2				11	2	12	4				31
Workers Welfare Board					14	17	14	15	1			61
Any Other			3	2	4	2	2					13
District Total	36	30	118	94	215	130	256	107	2		10	998

District: TOR GHAR

School Type	Matric Arts	Matric Science	FA	FSc	BA	BSc	MA	MSc	M Phil	Phd	Others	TOTAL
Private	3	4	6	5	4		2					24
Elementary Education Fo		2										2
District Total	3	6	6	5	4		2					26
Grand Total	3680	2974	12493	6757	20615	9466	17103	10496	498	58	1185	85325

No. of Teachers by Professional Qualification

District: ABBOTTABAD

School Type	Ph.D in Edu.	M.Phil in Edu.	M.Ed	MA Edu	B.Ed	SDPE	JDPE	Diploma in Edu	CT	DM	PTC	Untrained	Others	TOTAL
Private	6	17	155	81	1144	6	30	41	731	110	636	2970	221	6148
Semi Government			8	1	20				5		2	13	10	59
Benevolent Fund			1		14				4		3	1		23
Elementary Education Fo											1	3		4
Fauji Foundation			4		9							6		19
Police			1	3	17		3		33	6	31	69	11	174
Public Private Collaborati					3			1	2	2	1	6		15
Federal Government		6	3		17						1	2		29
Army			4		37		2		4	1	4			52
National Education Foun	1				2				1	1	5	6		16
District Total	7	23	176	85	1263	6	35	42	780	120	684	3076	242	6539

District: BANNU

School Type	Ph.D in Edu.	M.Phil in Edu.	M.Ed	MA Edu	B.Ed	SDPE	JDPE	Diploma in Edu	CT	DM	PTC	Untrained	Others	TOTAL
Private	7	4	54	27	409	16	43	19	303	44	504	264	45	1739
Semi Government	1	1	9		44		1			2				58
University Schools			5	4	38	1			2		7			57
Elementary Education Fo					2						8	3		13
Fauji Foundation			15		1									16
District/City Govt.			1		2							1		4
Workers Welfare Board			7		65	1	6		17	1	27	5	8	137
Public Private Collaborati			2		22							2		26
Federal Government			12		27	1	2		4	2	2			50
Army														0
National Education Foun					4				2		14	6		26
Telecom Foundation			2		6									8
Missionary			1						3		1	3	1	9
Any Other				3	5		1		5		4	15	2	35
District Total	8	5	108	34	625	19	53	19	336	49	567	299	56	2178

No. of Teachers by Professional Qualification

District: BATTAGRAM

School Type	Ph.D in Edu.	M.Phil in Edu.	M.Ed	MA Edu	B.Ed	SDPE	JDPE	Diploma in Edu	CT	DM	PTC	Untrained	Others	TOTAL
Private		1	11	15	75	2	15	13	107	31	119	153	113	655
University Schools					2			1	3	1	4		1	12
Elementary Education Fo					1		1		2		2	5		11
National Education Foun									1				1	2
Telecom Foundation														0
The Citizen's Foundation									1		1	4		6
Any Other				2	2				3		5	9	11	32
District Total		1	11	17	80	2	16	14	117	32	131	171	126	718

District: BUNNER

School Type	Ph.D in Edu.	M.Phil in Edu.	M.Ed	MA Edu	B.Ed	SDPE	JDPE	Diploma in Edu	CT	DM	PTC	Untrained	Others	TOTAL
Private	6	3	33	12	180	6	16	7	200	19	483	595	125	1685
Elementary Education Fo											8	3	1	12
Bacha Khan Education S			3		6	1	1		1					12
District Total	6	3	36	12	186	7	17	7	201	19	491	598	126	1709

District: CHARSADE

School Type	Ph.D in Edu.	M.Phil in Edu.	M.Ed	MA Edu	B.Ed	SDPE	JDPE	Diploma in Edu	CT	DM	PTC	Untrained	Others	TOTAL
Private	10	3	80	54	716	9	29	28	678	71	1036	1357	35	4106
University Schools			3		5							1		9
Elementary Education Fo									8		23	12	3	46
Police					4				7	1	13	35		60
Public Private Collaborati			1						4		5	1		11
National Education Foun											2			2
Mercy Pak International					3				4		4	3		14
Bacha Khan Education S			2		5	1					3	8		19
Any Other			1	1	10				8	1	29	15	3	68
District Total	10	3	87	55	743	10	29	28	709	73	1115	1432	41	4335

No. of Teachers by Professional Qualification

District: CHITRAL

School Type	Ph.D in Edu.	M.Phil in Edu.	M.Ed	MA Edu	B.Ed	SDPE	JDPE	Diploma in Edu	CT	DM	PTC	Untrained	Others	TOTAL
Private			91	14	473	5	7	10	191	17	191	355	40	1394
Semi Government					1				3		2	2		8
University Schools			1		3				2		4	4		14
Benevolent Fund					2				4		4	2	1	13
Elementary Education Fo					5				3		6	1		15
Frontier Education Found									1		2			3
Fauji Foundation			8		32									40
Police			1		14				1		7	17		40
Public Private Collaborati									1		1	2		4
Army			2	2	8		1		8			6		27
Pak Bait-ul-Mal			2		2						1	7	1	13
National Education Foun			5	3	57	1	4	2	40	2	84	76	3	277
Agha Khan Education Sy			44	5	161			1	54	1	48	35	1	350
Bacha Khan Education S					6				2		2	3		13
Any Other			1		18				9	2	6	12	12	60
District Total			155	24	782	6	12	13	319	22	358	522	58	2271

No. of Teachers by Professional Qualification

District: D.I.KHAN

School Type	Ph.D in Edu.	M.Phil in Edu.	M.Ed	MA Edu	B.Ed	SDPE	JDPE	Diploma in Edu	CT	DM	PTC	Untrained	Others	TOTAL
Private		11	138	93	882	24	57	23	762	66	845	647	358	3906
Semi Government			28		36				3	1	2	2		72
University Schools		1	17	1	49	2	1		5	1	4	8	12	101
Elementary Education Fo			1		1				2		8	1		13
Frontier Education Found			1		12	1								14
OPF			5	2	14				2			1	1	25
District/City Govt.			1		3				1	1	3			9
Police					12				3	2	4	1	9	31
Workers Welfare Board			8		40	1	2		9	3	6		83	152
Federal Government			1		12	1			1	1	4	1		21
Army			15		30								6	51
National Education Foun			1	5	7				4		40	30	2	89
Telecom Foundation			2		7				9		1		5	24
Missionary			6		35	2	1		2		5	8		59
Any Other			1		2				3			6	1	13
District Total		12	225	101	1142	31	61	23	806	75	922	705	477	4580

District: DIR BALA

School Type	Ph.D in Edu.	M.Phil in Edu.	M.Ed	MA Edu	B.Ed	SDPE	JDPE	Diploma in Edu	CT	DM	PTC	Untrained	Others	TOTAL
Private		2	10	3	70		7	9	61	7	120	176	16	481
University Schools			5	1	25				5		21	1		58
Elementary Education Fo											3	2		5
Public Private Collaborati					2		1		1		2			6
UNICEF												1		1
Bacha Khan Education S			1		3				1	1	1	7		14
Any Other											1	5	7	13
District Total		2	16	4	100		8	9	68	8	148	192	23	578

No. of Teachers by Professional Qualification

District: DIR PAYAN

School Type	Ph.D in Edu.	M.Phil in Edu.	M.Ed	MA Edu	B.Ed	SDPE	JDPE	Diploma in Edu	CT	DM	PTC	Untrained	Others	TOTAL
Private		4	97	10	418	7	12	13	295	17	377	896	97	2243
Semi Government											1			1
University Schools			15		15				3		4			37
Elementary Education Fo					1				3	1	24	4	1	34
Frontier Education Found			12		6				1		1			20
Fauji Foundation					2						5	4	1	12
Police			1		3				1		4	8	7	24
Public Private Collaborati				2	4	1	1	2	5	1	3	1	3	23
Army			3		13				3			16		35
National Education Foun									11	2	32	36		81
Missionary									2		4	2		8
Bacha Khan Education S					8				4				4	16
Any Other			2	1	15		2	3	9	1	34	22	42	131
District Total		4	130	13	485	8	15	18	337	22	489	989	155	2665

District: HANGU

School Type	Ph.D in Edu.	M.Phil in Edu.	M.Ed	MA Edu	B.Ed	SDPE	JDPE	Diploma in Edu	CT	DM	PTC	Untrained	Others	TOTAL
Private			12	11	214		19	7	235	33	339	550	10	1430
Semi Government			3		12				2		2	7		26
OPF			2		14									16
Army														0
Bacha Khan Education S					1				1		1	8		11
District Total			17	11	241		19	7	238	33	342	565	10	1483

No. of Teachers by Professional Qualification

District: HARIPUR

School Type	Ph.D in Edu.	M.Phil in Edu.	M.Ed	MA Edu	B.Ed	SDPE	JDPE	Diploma in Edu	CT	DM	PTC	Untrained	Others	TOTAL
Private		2	149	34	943	13	24	25	629	76	731	1608	377	4611
University Schools			4		6				4		2			16
Fauji Foundation									1		1	2		4
Police			2		12			2	17		15	28	17	93
Workers Welfare Board		1	53		113				7	2	12	23	41	252
Public Private Collaborati			1		10		2	1	11	1	6	21	7	60
WAPDA			38		47				3		9		2	99
National Education Foun									2		10	4		16
Telecom Foundation			4		59		2	3	6	1	11	14	3	103
Any Other			3	7	17		1		5		6	25	6	70
District Total		3	254	41	1207	13	29	31	685	80	803	1725	453	5324

District: KARAK

School Type	Ph.D in Edu.	M.Phil in Edu.	M.Ed	MA Edu	B.Ed	SDPE	JDPE	Diploma in Edu	CT	DM	PTC	Untrained	Others	TOTAL
Private	1	3	57	29	543	7	29	11	307	16	457	631	60	2151
Elementary Education Fo									1			2		3
Fauji Foundation			2		10							3	5	20
Workers Welfare Board			12	5	52	2			29	1	46	7		154
National Education Foun									1			2		3
Bacha Khan Education S			1		16			1	4		2	1	4	29
Any Other				1	13		1		20	1	19	20		75
District Total	1	3	72	35	634	9	30	12	362	18	524	666	69	2435

No. of Teachers by Professional Qualification

District: KOHAT

School Type	Ph.D in Edu.	M.Phil in Edu.	M.Ed	MA Edu	B.Ed	SDPE	JDPE	Diploma in Edu	CT	DM	PTC	Untrained	Others	TOTAL
Private	6	4	90	36	518	3	33	21	420	76	465	1118	82	2872
Semi Government			1		30							1	27	59
University Schools			2							1	1	6		10
Elementary Education Fo												11		11
Fauji Foundation			6	6	28									40
Police				2	6		3	3	13	2	10	3		42
Workers Welfare Board			7	3	47	2	2		2	1		53	1	118
Public Private Collaborati					1				7	1	6	8		23
Federal Government			16		50	3			12		5	5		91
Army		35	14	16	10				2			50		127
P.A.F			1		50				1				50	102
National Education Foun			1		4			4	9		17	28	1	64
Telecom Foundation			1		6									7
Missionary			5	9	20				16		4	4		58
Bacha Khan Education S			4					1	3		1	2		11
Any Other			1	5	6				9	1	10	50	5	87
District Total	6	39	149	77	776	8	38	29	494	82	519	1339	166	3722

District: KOHISTAN

School Type	Ph.D in Edu.	M.Phil in Edu.	M.Ed	MA Edu	B.Ed	SDPE	JDPE	Diploma in Edu	CT	DM	PTC	Untrained	Others	TOTAL
Private			9	11	29		7	9	42	8	43	17	12	187
District Total			9	11	29		7	9	42	8	43	17	12	187

No. of Teachers by Professional Qualification

District: LAKKI

School Type	Ph.D in Edu.	M.Phil in Edu.	M.Ed	MA Edu	B.Ed	SDPE	JDPE	Diploma in Edu	CT	DM	PTC	Untrained	Others	TOTAL
Private			40	3	273	8	14	3	139	20	291	215	39	1045
Elementary Education Fo					1							2		3
Frontier Education Found			4		12									16
Police			1		10				8		19	5	2	45
Workers Welfare Board			24		37	1	1		15		31		6	115
Public Private Collaborati					3						2	2		7
Bacha Khan Education S					8									8
Any Other					11	1	1		7	1	11	4	3	39
District Total			69	3	355	10	16	3	169	21	354	228	50	1278

District: MALAKAND

School Type	Ph.D in Edu.	M.Phil in Edu.	M.Ed	MA Edu	B.Ed	SDPE	JDPE	Diploma in Edu	CT	DM	PTC	Untrained	Others	TOTAL
Private	1	7	41	12	267	4	18	4	205	11	363	687	31	1651
Elementary Education Fo						1	1				7	4		13
Public Private Collaborati				2	1				3		3	10		19
Federal Government			7		8				6	1				22
Army			2		22				5		5	3		37
National Education Foun			2	1	5		1		15		48	35		107
Bacha Khan Education S			4		16	1	1		3					25
Any Other					3							5	1	9
District Total	1	7	56	15	322	6	21	4	237	12	426	744	32	1883

District: MANSEHRA

School Type	Ph.D in Edu.	M.Phil in Edu.	M.Ed	MA Edu	B.Ed	SDPE	JDPE	Diploma in Edu	CT	DM	PTC	Untrained	Others	TOTAL
Private	2	5	98	46	599	4	45	37	514	88	580	1042	713	3773
University Schools		9	5		8				2					24
Elementary Education Fo					1				2		24	7		34
Army		6			12				1			14	9	42
Pak Bait-ul-Mal					4								1	5
National Education Foun													1	1
The Citizen's Foundation			1	1	13		1		18	1	12	15	33	95
Any Other		2	1	1	6		1	1	5	3	8	28	21	77
District Total	2	22	105	48	643	4	47	38	542	92	624	1106	778	4051

No. of Teachers by Professional Qualification

District: MARDAN

School Type	Ph.D in Edu.	M.Phil in Edu.	M.Ed	MA Edu	B.Ed	SDPE	JDPE	Diploma in Edu	CT	DM	PTC	Untrained	Others	TOTAL
Private	3	8	175	23	1126	23	67	17	682	77	1415	1610	584	5810
Semi Government			4		3					1	8	14	12	42
University Schools				5	1						4		2	12
Elementary Education Fo			1		2						9	11	1	24
OPF			4		13				12	2		37		68
Workers Welfare Board			10		54		3		5		11	31	32	146
Public Private Collaborati			7		8				10		23	12		60
Federal Government			15		43	3			10	1	5		14	91
National Education Foun					4				1		9	7		21
Missionary											1	1		2
The Citizen's Foundation			5		7				1		2			15
Bacha Khan Education S					1				3		4			8
Any Other			1	3	9			5	4	4	22	19	7	74
District Total	3	8	222	31	1271	26	70	22	728	85	1513	1742	652	6373

District: NOWSHERA

School Type	Ph.D in Edu.	M.Phil in Edu.	M.Ed	MA Edu	B.Ed	SDPE	JDPE	Diploma in Edu	CT	DM	PTC	Untrained	Others	TOTAL
Private			89	39	616	6	35	14	448	51	695	1633	257	3883
Semi Government					3				1					4
Elementary Education Fo			1		3				2		4	11		21
Police			1		2				2		1	3		9
Workers Welfare Board														0
Federal Government			28		84	1			12	1	8		3	137
Army			5		22				2		2	30	2	63
Cantonment Board				1	4				4		4			13
National Education Foun											3	3		6
Missionary			2		26				11		9	21	3	72
The Citizen's Foundation					4				3		2	3	10	22
Any Other			7	1	55		2		27	6	39	94	8	239
District Total			133	41	819	7	37	14	512	58	767	1798	283	4469

No. of Teachers by Professional Qualification

District: PESHAWAR

School Type	Ph.D in Edu.	M.Phil in Edu.	M.Ed	MA Edu	B.Ed	SDPE	JDPE	Diploma in Edu	CT	DM	PTC	Untrained	Others	TOTAL
Private	19	25	314	170	2021	12	33	82	1409	176	2533	7156	308	14258
Semi Government			3		17				3	2	5	13	1	44
University Schools	2	2	245		101	2			21		8	91		472
Elementary Education Fo									3		14	9	6	32
Frontier Education Found												37		37
Fauji Foundation														0
District/City Govt.			6		42	2	3		25		20	8	3	109
Police			1		3				11	1	14	60		90
Workers Welfare Board			7		38			1	2			60		108
Public Private Collaborati		1	7		23			2	28		39	46	2	148
Federal Government		1	25		101	2	1	1	26	4	8	8	1	178
Army			19		122				1		3	103	34	282
P.A.F														0
WAPDA					2				3		3	9		17
National Education Foun									1		5	8		14
Telecom Foundation												6		6
Missionary			10		51				23		27	46		157
Mercy Pak International					6		1		13		18	53	1	92
Bacha Khan Education S			1		9	1	1		4		8			24
Any Other				2	6			1	17		41	156	13	236
District Total	21	29	638	172	2542	19	39	87	1590	183	2746	7869	369	16304

District: SHANGLA

School Type	Ph.D in Edu.	M.Phil in Edu.	M.Ed	MA Edu	B.Ed	SDPE	JDPE	Diploma in Edu	CT	DM	PTC	Untrained	Others	TOTAL
Private		1	9	5	73		11	2	86	10	187	225	30	639
Police					2		1		4		7	11		25
Public Private Collaborati					3			2	4		8		2	19
Army									4		4		2	10
Pak Bait-ul-Mal									4				1	5
District Total		1	9	5	78		12	4	102	10	206	236	35	698

No. of Teachers by Professional Qualification

District: SWABI

School Type	Ph.D in Edu.	M.Phil in Edu.	M.Ed	MA Edu	B.Ed	SDPE	JDPE	Diploma in Edu	CT	DM	PTC	Untrained	Others	TOTAL
Private	6	6	99	48	905	10	65	23	497	52	1154	1780	129	4774
Semi Government											3	4		7
University Schools					2							16		18
Elementary Education Fo					1				2		6	11		20
Fauji Foundation					12							9		21
Police			3		13		1		4		4	9		34
Workers Welfare Board														0
WAPDA			17	1	24						3		1	46
Pak Bait-ul-Mal			1	2	2									5
National Education Foun					5		1		1		12	19		38
The Citizen's Foundation			3		7			2			4	1		17
Bacha Khan Education S			1		6				3					10
Any Other			7		31	1	4	2	10	4	38	37	7	141
District Total	6	6	131	51	1008	11	71	27	517	56	1224	1886	137	5131

District: SWAT

School Type	Ph.D in Edu.	M.Phil in Edu.	M.Ed	MA Edu	B.Ed	SDPE	JDPE	Diploma in Edu	CT	DM	PTC	Untrained	Others	TOTAL
Private	3	10	118	50	609	6	29	38	492	43	1117	2360	140	5015
Semi Government			3		64									67
Elementary Education Fo											8	1		9
Police					8				11		11	17		47
Workers Welfare Board			40		19		2					17		78
Public Private Collaborati			7		4							6		17
National Education Foun				3					2		10	17		32
Missionary			1	2	6				3			2		14
The Citizen's Foundation					12				26	1	12			51
Any Other					3			1	6	1	14	35		60
District Total	3	10	169	55	725	6	31	39	540	45	1172	2455	140	5390

No. of Teachers by Professional Qualification

District: TANK

School Type	Ph.D in Edu.	M.Phil in Edu.	M.Ed	MA Edu	B.Ed	SDPE	JDPE	Diploma in Edu	CT	DM	PTC	Untrained	Others	TOTAL
Private			7	8	130	9	31	12	137	25	308	188	38	893
Semi Government				5	5	1		8	6		4		2	31
Workers Welfare Board			1		11				12	2	12	23		61
Any Other					2				1	1	3	6		13
District Total			8	13	148	10	31	20	156	28	327	217	40	998

District: TOR GHAR

School Type	Ph.D in Edu.	M.Phil in Edu.	M.Ed	MA Edu	B.Ed	SDPE	JDPE	Diploma in Edu	CT	DM	PTC	Untrained	Others	TOTAL
Private					1				6	1	8	4	4	24
Elementary Education Fo											2			2
District Total					1				6	1	10	4	4	26
Grand Total	74	181	2985	954	16205	218	744	519	10593	1232	16505	30581	4534	85325

Enrolment as on 31st May 2012.

29. a Boys Enrolment by Class:

Age	Play Group	Nursery	Prep/ KG	CI-1	CI-2	CI-3	CI-4	CI-5	CI-6	CI-7	CI-8	CI-9	CI-10	CI-11	CI-12	Total
3+																
4+																
5+																
6+																
7+																
8+																
9+																
10+																
11+																
12+																
13+																
14+																
15+																
16+																
17+																
18+																
19+																
20+																
>=21																
Total																

29. b Girls Enrolment by Class:

Age	Play Group	Nursery	Prep/ KG	CI-1	CI-2	CI-3	CI-4	CI-5	CI-6	CI-7	CI-8	CI-9	CI-10	CI-11	CI-12	Total
3+																
4+																
5+																
6+																
7+																
8+																
9+																
10+																
11+																
12+																
13+																
14+																
15+																
16+																
17+																
18+																
19+																
20+																
>=21																
Total																

30. Number of Repeaters (failed and re-admitted) by Gender and Class:

Gender	Play Group	Nursery	Prep/ KG	CL-1	CL-2	CL-3	CL-4	CL-5	CL-6	CL-7	CL-8	CL-9	CL-10	CL-11	CL-12	Total
Boys																
Girls																

Principal's Name _____

Name of Data Collector _____

Cell #: _____

Signature: _____

Signature & Stamp _____

Name & Signature of District Focal Person

Dated: ____/____/2012

_____ Dated: ____/____/2012